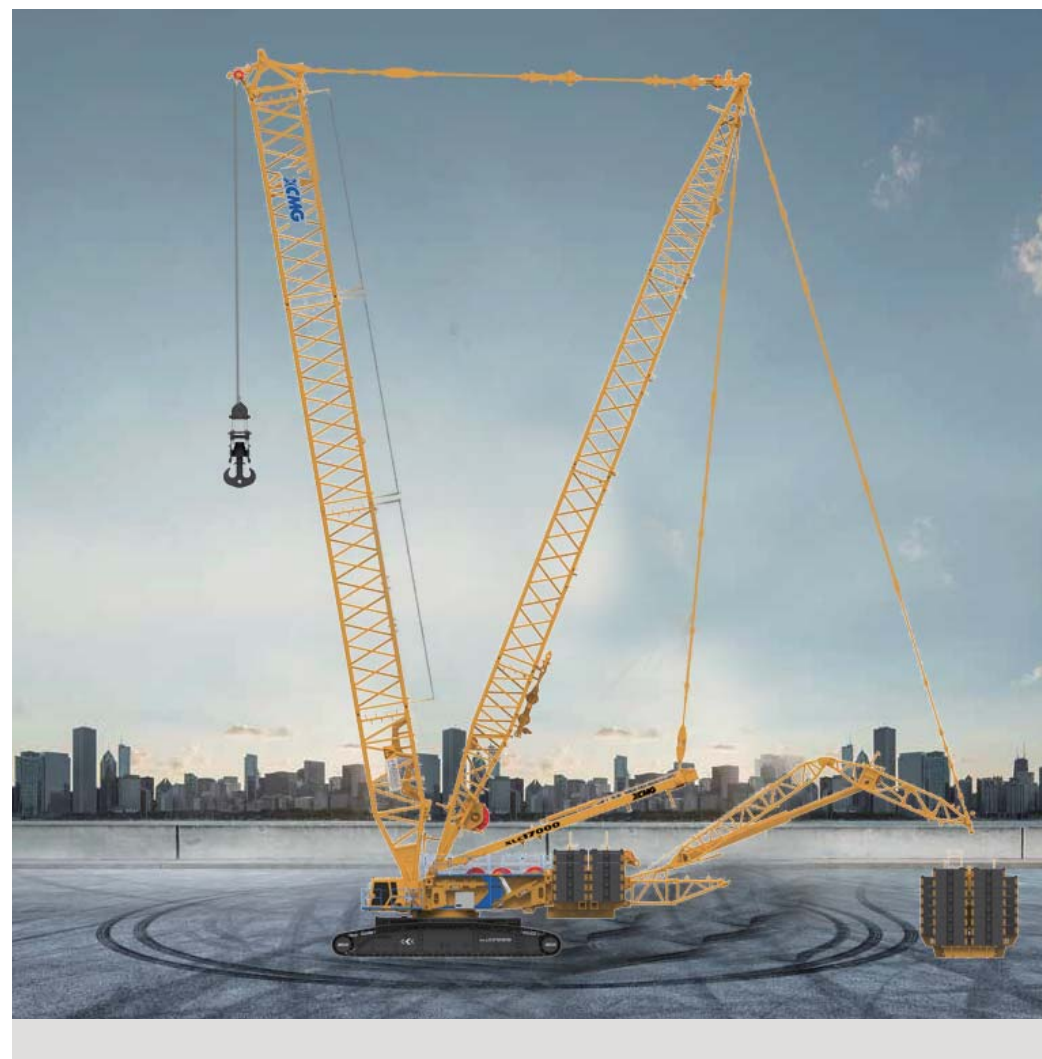


XLC17000 Crawler Crane



地址(Add): 中国江苏省徐州市金山桥经济开发区桃山路19号 邮编(Postal Code): 221004
 No.19 Taoshan Road, Economic development zone of jinshanqiao, Xuzhou, Jiangsu Province, China
 统一服务热线(Unified service hotline): 86 400-110-9999

销售热线Sales Hotline
 销售电话(Sale Tel): 86 0516-87892094
 销售传真(Sale Fax): 86 0516-87892074
 电子邮件(E-mail): jyxld@xcmg.com
 服务质量投诉电话
 (Quality Supervision Tel): 86 0516-87892587

服务热线Service Hotline
 服务电话(Service Tel): 86 400-001-5678
 服务传真(Service Fax): 86 0516-87892080
 备件电话(Service Tel): 86 0516-87892086
 备件传真(Service Fax): 86 0516-87892083



欢迎访问徐工商城
 省心更省钱一站式



欢迎关注徐工集团官方微信
 1. 直接扫码“XCMG_xgj”增加好友。
 2. 微信公众账号“徐工集团起重机”
 3. 直接扫描上方二维码



CONTENTS

目录

P03	<ul style="list-style-type: none">• Product Highlights• Component and system description• Safety protection measures• Main technical parameters
P13	<ul style="list-style-type: none">• Lifting Capacity Tables in Typical Working Conditions• The Main Technical Parameters
P40	<ul style="list-style-type: none">• Reference transportation parameters

02

XLC17000 CRAWLER CRANE

P03	Product Highlights
P04-P07	Component and system description
P08-P10	Safety protection measures
P11-P12	Main technical parameters

Product highlights

All-new design

New platform: XLC platform series products.

New concept: More focus on top-level design, more focus on market center, more focus on customer needs, more focus on hommization.

Higher degree of modularization and generalization; The lifting speed of multi pump confluence is faster; Consider efficiency, convenience, and cost savings in all aspects of disassembly/assembly, transportation, use, and storage; The new data has a more precise underlying control, a more comfortable remote control operation, and a better visual display interface.

Higher lifting height, stronger performance, wider coverage

Higher lifting height: the lifting height of superlift working condition reaches 185m, the lifting height of standard working condition reaches 125m.

Stronger performance: Goose-head boom condition 120+8m, rated load 360t, lifting height 114m; 177+8m rated load 242t, lifting height 170m; 186+8m rated load 213t, lifting height 180m.

Wider coverage: covering 10MW+various types of wind turbine lifting needs on land, with a wider lifting range.

高效便利/ High efficient and convenient

Efficient assembly: Under standard working conditions, there is no need for lateral outriggers, which meets the requirements of multi-directional lifting, making assembly more convenient; Under standard working condition, the reinforced counterweight tray can be separated, making the conversion of counterweight quantities faster; Goose head boom + long and short combined pendants, efficient disassembly and assembly.

Efficient operation: standard working condition turntable enhancement technology, standard working condition enhanced counterweight technology, and standard working condition variable luffing displacement technology (patented technology).

Convenient dismantling and transportation: Equipped with efficient and convenient dismantling technologies such as integrated transportation of main luffing and super-lift main luffing, transportation of turntable catwalks and guardrails with the basic crane, and self-dismantling of track beams by mast crane.

Intelligent and pleasant Higher lifting height, stronger performance, wider coverage

Intelligent AI operation: boom raising/lowering, hoisting, reeving can be realized by one button, improving operational efficiency and reducing operational intensity.

Intelligent lifting and protection technology: Intelligent path planning and intelligent barrier avoidance technology, intelligent guidance technology, intelligent hook dynamic swing prevention technology, intelligent butler technology.

Pleasant cab: hollow columns, large space, wide view, comfortable seats, compartment on co-pilot side, etc.

Higher degree of universality: components have a higher degree of versatility and sufficient spare parts.

Component and system description

Boom details

Table of boom details

No.	Boom name	Qty.	Remarks
1	Boom butt	1	
2	12m transition section	1	
3	12m section A	1	
4	12M section C	3	
5	12m section B	1	
6	3m section	1	
7	6m section	1	
8	12m center hitch section I.	1	
9	12m section D	1	
10	12m section E	1	
11	12m center hitch section II	1	
12	12m section F	2	
13	12m transition section II	1	
14	12m transition section III	1	
15	Top section	1	
16	Goose Head section-260	1	
17	Goose Head section-360	1	
18	Heavy-duty boom head	1	
19	Boom head pulley block A	2	
20	6m tower jib section D	1	

Component and system description

Mechanism composition

The mechanism configuration and function are shown in the table below

Mechanism	Function	Position
Main hoist winch	Used for hoisting of boom, fixed jib and tower jib	Inside the turntable, at the rear side slewing center
Aux. hoist winch	Used for hoisting of boom, fixed jib and tower jib	At the rear side of the main hoist winch
Single pulley mechanism	For the hoisting of the single pulley at the main boom, tower jib head	Boom butt
Boom luffing system	Main boom and SL mast luffing	Inside the turntable, at the rear side of turntable
Tower jib luffing mechanism	Used for tower jib luffing operation	Boom butt
SL luffing system	SL main boom luffing	SL Mast butt
Slewing gear	Used for superstructure slewing	Front part of turntable
Travel mechanism	Used for crane travel	Crawler drive sprocket
Reeving winch	Auxiliary lift, variable frame mounting wire rope	Front part of turntable

Main hoist winch, single line pull 18t, rope diameter ϕ 28mm, length1600m;
 Auxiliary hoist winch, single line pull18t, wire rope diameter ϕ 28 mm, length1600m;
 Single pulley mechanism, single rope pull17t, wire rope diameter ϕ 28 mm, length550m.

Operator's cab

The operator's cab is ergonomically designed, safe and comfortable, with safety glass and a protective top bar. The windows are fitted with sunshades, sliding door and adjustable front and rear seats. Equipped with heating and cooling. It can be transported by turning 90° and placed at the front side of turntable(main boom butt removed) to reduce the transport size. The driver's cab can be raised by 20° for easy observation of high-altitude operations.

Travel mechanism

The two track frames are set symmetrically, installed with crawler shoes of 2m in width. They can be operated synchronously or separately to realize straight travel and turning. Each track is driven by 2 travel reducers and travels 100% loaded. The tension of the track shoes can be adjusted through hydraulic cylinders and special adjustment gaskets.

Hydraulic system

Adopting a closed, electrically proportional pilot variable pump control system, the system is stable and has good speed precision adjustment characteristics.

Main, auxiliary hoisting, main boom and jib luffing, travel, slewing are all closed pump control, no balance valve and directional valve, and the transmission is stable and impact free. Both hoisting and luffing have multi pump confluence function, with superior transmission capacity and speed.

For the main and auxiliary hoisting, luffing, and travel mechanisms with a large speed range, variable motor drive is used.

The main hydraulic components are imported.

Fuel tank capacity: About 2000L.

Electrical system

The electrical system mainly includes the following parts: engine control, monitoring instruments, auxiliary equipment, hydraulic system control, load moment limiter, and safety monitoring.

The conventional electrical system adopts 24V parallel circuit, and the wiring of all electric equipment adopt single wire system. Including power supply, start control, engine control and status monitoring, cab air conditioning and audio, lighting, wipers, wiper, walkie-talkie, etc.

The PLC monitoring system includes the control of main and auxiliary winch, rotation, main boom tower jib luffing, left and right travel, as well as cab rotating, overturning, and other actions. All actions adopt electro-hydraulic proportional control technology, which is effectively controlled by PLC logic to ensure the realization of all functions of the host; Intelligent AI operation, with functions such as one button to raise/lower boom, lifting, turning, and rope reeving, improves operational efficiency and reduces labor intensity; Intelligent butler technology provides intelligent, efficient, and professional business management services; The auxiliary lifting system provides intelligent lifting planning and digital lifting control services, fully reflecting the people-oriented design concept.

Component and system description

Engine system

Manufacturer: Weichai;
 Model WP17G770E302
 Rated power: 2×425 kW/2100rpm;
 Maximum output torque: 3000 N.m;
 Type: V-type eight cylinder, direct injection, water-cooled, four-stroke, High pressure common rail, diesel engines;
 Fuel tank capacity: about 1000L.

Hook Configuration (Optional Hook)

Name	1000t	800t	300t	50t	16t
Weight (t)	28.2	21	9.6	2.5	0.9
Qty.	2	2	2	1	1
Number of pulley	40	28	10	1	0
Can be split	500t	400t	150t	—	—

Counterweight

The total car-body counterweight is 95 ton, the total turntable counterweight is 245 ton, the total SL counterweight is 550 ton. All counterweights are designed to be easy to remove and install, increasing assembly efficiency.

Centralized lubrication system

The progressive centralized lubrication system, controlled by computer programming, can automatically and point by point add lubricating oil, ensuring sufficient oil at each lubrication point, making vehicle maintenance easier and more convenient.

Safety protection measures

The safety devices include: load moment limiter, slewing locking device, boom backstop device, over-hoisted prevention, over-released protection, boom angle limiter, anemometer, level meter, slewing warning and hydraulic system relief valve, balance valve, two-way hydraulic lock, monitoring of overall crane gravity center, and etc.

LMI

The professional customized Wika advanced microprocessor technology features low energy consumption, strong functionality, high sensitivity, and easy operation.

Detection function: LMI can automatically detect parameters such as boom angle and lifting weight.

Display function: Large screen LCD display, displaying operating parameters such as load moment percentage, actual lifting capacity, rated lifting capacity, radius, boom length and angle, maximum lifting height, working condition code, parts of line, limiting angle, information code, etc. in both Chinese and graphical format.

Warning function: With complete pre alarm and overload stop function. When the actual lifting capacity exceeds the rated lifting capacity and the boom exceeds the limit angle, the load moment limiter will alarm and stop the current action.
 Fault self-diagnosis function: When a fault occurs, the system will display the fault code on the display screen.

Over-winded protection for main and auxiliary hoisting

Over-winded protection for main and auxiliary hoisting
 When main winch and aux. winch hoist to a certain height, the over-wind indicator light on display will light up, at the same time, the movement of hoisting up will be stopped by LMI automatically.

Over-released protection for main and auxiliary hoisting

When the encoder installed inside the drum detects that the remaining steel wire rope on the lifting drum is less than or equal to three loops, the display icon will alarm, and the load moment limiter will automatically stop the hoisting drum from releasing the rope.

Safety protection button

Set on the front side of the handle, press the button to operate the handle, otherwise the signal will be blocked and the handle will not work. Prevents the safety risk of accidentally touching the handle.

Safety protection measures

Ratchet locking device

Used for safe parking of cranes when not in operation. When the drum is in operation, the automatic ratchet opens, and when the drum stops moving, the ratchet automatically closes. The display can display the working status of the ratchet.

Boom angle limiter

When the main boom angle reaches the maximum limit, the boom movement is restricted; when the main boom exceeds the maximum working range, the boom lowering action is restricted.

The upper and lower limits of tower jib are controlled by angle limit switch.

Monitoring system

The high-definition wireless zoom monitoring system monitors the working status of the hook in real-time.

Real time high-definition digital closed-loop monitoring of the working status of the hoisting mechanism, main luffing mechanism, rear of the turntable, super-lift luffing mechanism, tower jib luffing mechanism, and single pulley mechanism.

Support remote cloud and monitor crane status anytime and anywhere.

Audio and video alarm

When the crawler crane moves or rotates, the light flashes and an audible alarm sounds.

Triple color warning light

The load moment limiter alarm light consists of three colors. When the load is below 90%, the "green light" lights up, indicating that the actual lifting weight of the crane is within the safe range; When the load is between 90% and 100%, the "yellow light" lights up, indicating that the actual lifting capacity of the crane is close to the rated lifting capacity; When the load exceeds 100%, the "red light" lights up, indicating that the crane has been overloaded. In the dangerous area, the control system automatically cuts off the crane from running in the dangerous direction.

Illumination light

There are illumination lights in front of turntable, above the cab or in the cab for night operation.

Height mark lamp

It is located on boom tip for high-altitude warning.

Anemometer

Real time detection of the current wind speed, display on the display interface and generate a danger alarm.

Center of gravity monitoring

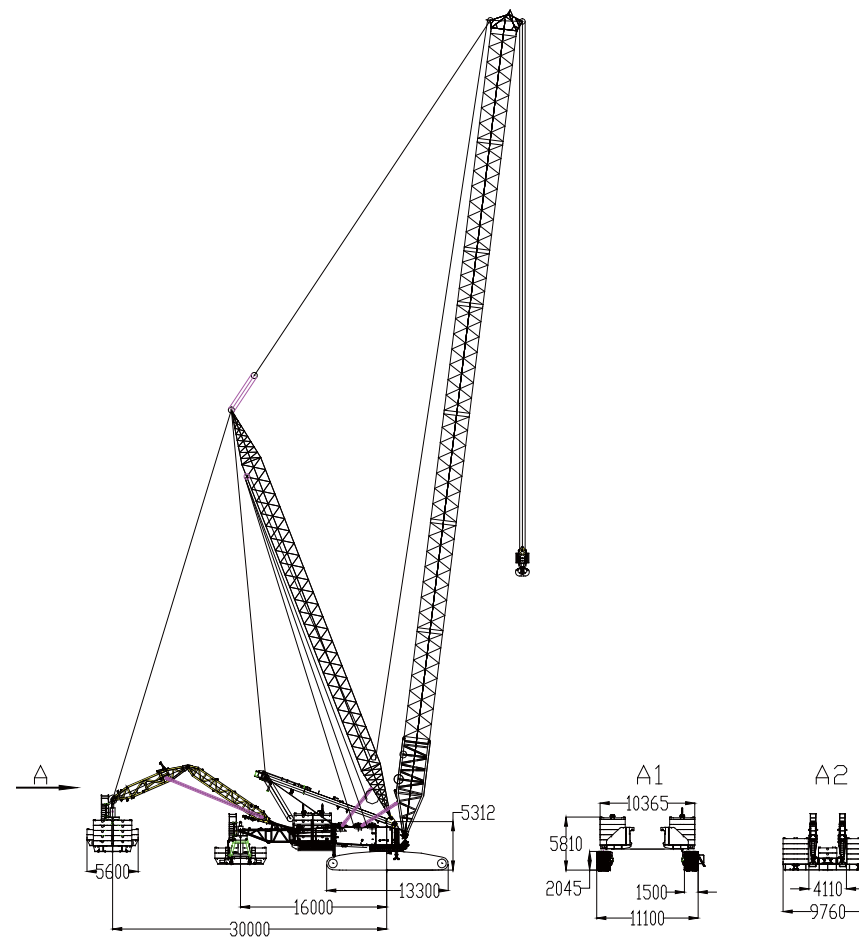
Real time monitoring of the center of gravity position of the entire machine, displaying the center of gravity position on the display interface and giving a danger alarm.

Main technical parameters

Lifting capacity

Items	Unit	Value	
Max. rated lifting capacity	t	1250	
Max. load moment	tm	17500	
	m	36~108	
Heavy duty boom	HB-standard working condition	m	36~108
	Light Duty Main boom (129, 132 optional)	m	66~126
	Goose-head boom (129, 132 optional)	m	(66~126) +8
SL working condition	Heavy boom	m	48~129
	Light boom	m	66~192
	Goose-head boom	m	(66~192) +8
The length of SL mast	m	48	
Grade ability	%	15	
Turntable counterweight	t	245	
Car-body counterweight	t	95	
SL counterweight	t	550	
SL luffing range	m	16~30	
Track gauge × track length × track shoe width	m	9.6×13.3×1.5	
Engine rated power	kW	566	
Overall crane weight	t	720	
Maximum single-piece (basic crane) transport weight	t	78/70	
Maximum single-piece (basic crane) transport dimensions (L×W×H)	m	15.73×4.2×3.4	

Dimension



Outline dimension of the crane

13

XLC17000 CRAWLER CRANE

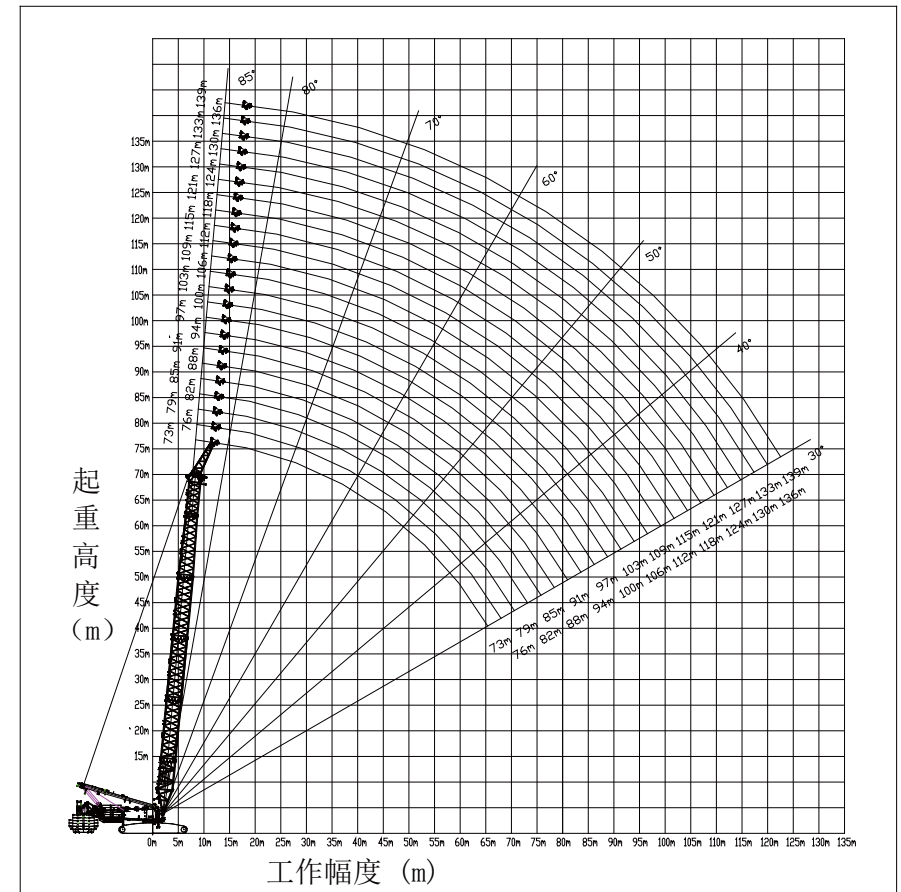
P14 Lifting Capacity Tables in Typical Working Conditions

P15-P39 The Main Technical Parameters

XLC17000

Lifting Capacity Tables in Typical Working Conditions

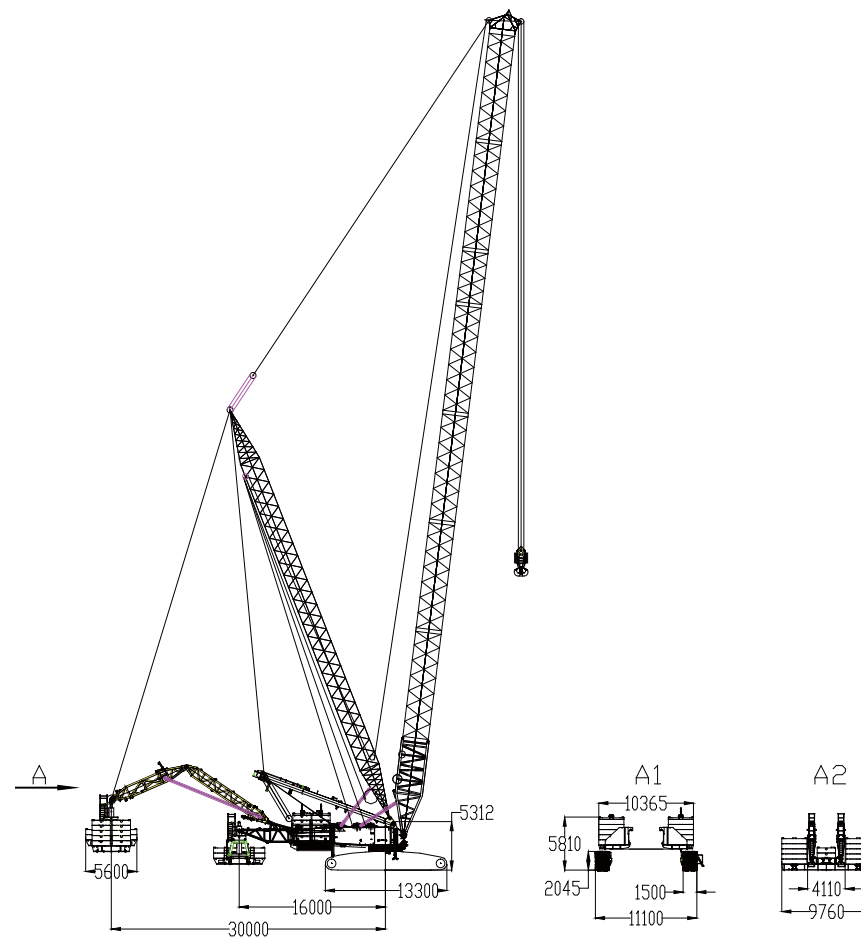
Goose head boom lifting range of XLC17000 under standard working condition HETB



Description of boom combinations of goose head boom under the standard working condition

Working condition	Boom section serial number	1	2	4	6	7	9	10	11	12	13	14	20	15	16/17
	Name of boom sections	Boom butt	12m transition section I	12M section C	3m section	6m section	12m section D	12m section E	12m center hitch section II	12m section F	12m transition section II	12m transition section III	6m tower jib insert	7.5m top section	Wind power goose-head boom/jib
	Length (m)	10.5	12	12	3	6	12	12	12	12	12	12	6	7.5	7
66	1	1					1				1	1		1	1
72	1	1			1	1					1	1		1	1
78	1	1				1	1				1	1		1	1
81	1	1	1			1	1				1	1		1	1
84	1	1			1	1	1				1	1		1	1
87	1	1	1	1	1	1	1				1	1		1	1
90	1	1	1			1	1				1	1		1	1
93	1	1	1	1		1	1				1	1		1	1
96	1	1	1		1	1	1				1	1		1	1
99	1	1	1	1	1	1	1				1	1		1	1
102	1	1	1			1	1			1	1	1		1	1
105	1	1	1	1		1	1			1	1	1		1	1
108	1	1	1		1	1	1			1	1	1		1	1
111	1	1	1	1	1	1	1			1	1	1		1	1
114	1	1	1			1	1			2	1	1		1	1
117	1	1	1	1		1	1			2	1	1		1	1
120	1	1	1		1	1	1			2	1	1		1	1
123	1	1	1	1	1	1	1	1	1	1	1	1		1	1
126	1	1	1			1	1	1		2	1	1		1	1
129	1	1		1			1	1	4	1	1			1	1
132	1	1							2	4	1	1	1	1	1

Dimension



Outline dimension of the crane

(245t转台平衡重+95t车身平衡重+150t增强平衡重)

245t turntable counterweight +95t car-body counterweight +150t reinforces counterweight

Radius	The main boom length (66m-102m) and the goose-head boom length 8m									
	66	72	78	84	87	90	93	96	99	102
13	260									
14	260	260	260							
15	260	260	260	260	260	260				
16	260	260	260	260	260	260	260	260	260	
17	260	260	260	260	260	260	260	260	260	260
18	257	260	260	260	260	260	260	260	260	260
19	254	257	259	260	260	260	260	260	260	260
20	251	254	256	259	259	260	260	260	260	260
21	247	251	253	256	257	258	259	260	260	260
22	243	248	251	253	254	255	256	257	258	259
23	239	244	248	251	252	253	254	255	256	256
24	235	240	245	248	250	251	252	253	254	254
25	231	237	241	246	247	248	250	249	243	243
26	227	233	238	242	244	246	241	238	233	233
28	220	226	231	232	230	225	222	219	214	214
30	214	220	216	212	211	208	205	202	197	198
32	203	201	199	195	193	191	189	187	182	183
34	187	185	183	180	179	176	174	173	169	170
36	172	170	168	166	165	163	161	160	157	158
38	160	157	156	153	152	150	149	148	145	146
40	148	146	144	142	140	139	137	136	133	136
44	129	127	125	122	121	119	118	117	114	116
48	113	111	109	107	105	104	102	101	98	100
52	100	98	96	94	92	91	89	88	85	87
56	89	87	85	83	81	80	78	77	74	76
60	80	78	76	73	72	70	69	67	64	67
64	72	69	67	65	63	62	60	59	56	59
68	62	60	58	56	55	53	52	49	45	51

XLC17000 HETB-260 Standard working condition goose head boom Lifting Performance Chart

245t turntable counterweight +95t car-body counterweight +150t reinforced counterweight

幅度 Radius	The main boom length (105m-132m) and the goose-head boom length 7m									
	105	108	111	114	117	120	123	126	129	132
17	260	260	260							
18	260	260	260	260	260	255				
19	260	260	260	260	257	250	245	239	235	232
20	260	260	260	259	252	245	239	234	230	231
21	260	260	260	254	247	240	234	229	225	228
22	258	258	254	248	241	235	230	224	221	223
23	256	255	248	243	236	230	225	220	216	219
24	254	249	243	238	231	225	220	215	212	214
25	243	241	237	232	226	220	215	211	208	209
26	231	230	228	227	221	215	211	206	204	205
28	210	209	208	208	200	197	193	198	195	190
30	193	191	190	190	189	181	178	177	177	175
32	177	176	174	175	173	172	164	163	164	162
34	163	162	160	161	160	158	156	151	152	150
36	151	150	148	149	147	146	144	145	141	140
38	140	139	137	138	136	135	133	134	135	130
40	130	129	128	128	127	125	123	124	125	121
44	114	112	111	111	110	108	107	107	108	108
48	100	98	97	97	96	94	92	93	94	94
52	88	86	85	85	84	82	81	81	82	82
56	77	76	74	75	74	72	70	71	72	72
60	66	64	63	64	62	61	59	60	61	61
64	58	56	55	55	54	53	51	51	52	52
68	50	49	48	48	47	46	44	44	45	45

XLC17000 HETB-360 Lifting performance chart for goose head boom under standard working condition

245t turntable counterweight +95t car-body counterweight +310t reinforced counterweight

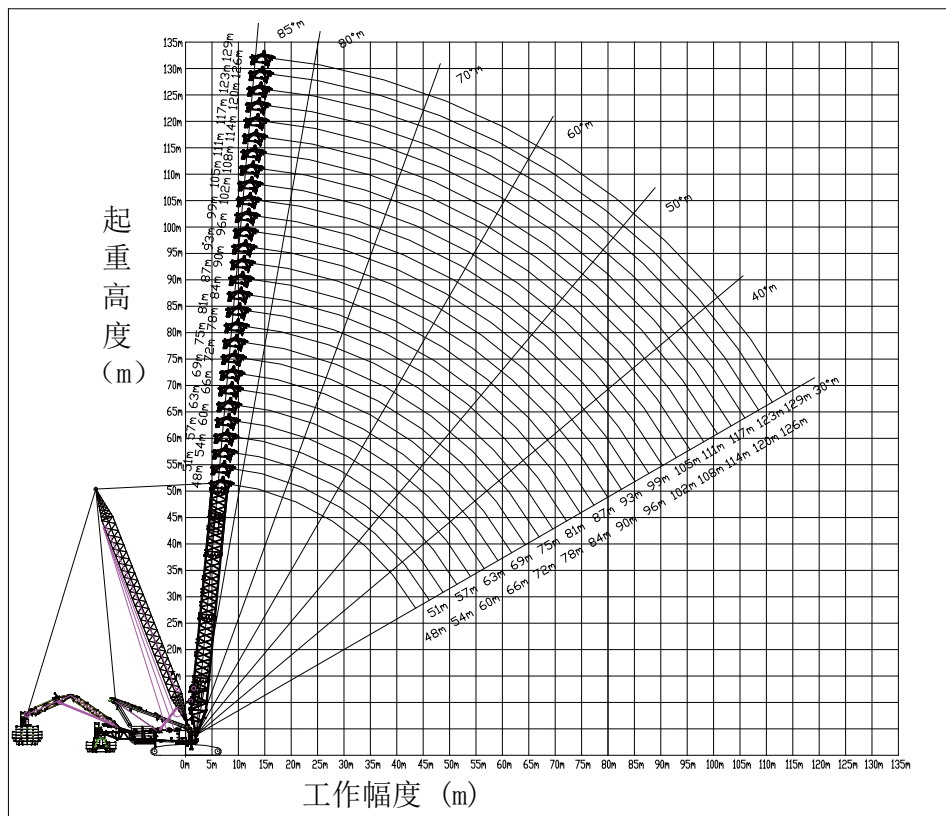
Radius	The main boom length (66m-102m) and the goose-head boom length 8m									
	66	72	78	84	87	90	93	96	99	102
13	360									
14	360	360	360							
15	360	360	360	360	360	360				
16	360	360	360	360	360	360	360	360	360	360
17	360	360	360	360	360	360	360	360	360	354
18	360	360	360	360	360	360	360	360	353	346
19	360	360	360	360	360	360	360	356	344	338
20	360	360	360	360	360	360	357	347	336	330
21	357	360	360	360	360	358	348	339	328	322
22	352	357	360	360	359	349	339	330	320	315
23	348	353	357	352	349	340	331	322	312	307
24	344	340	338	335	333	329	322	314	304	300
25	326	323	322	319	317	314	311	306	297	293
26	311	308	306	304	302	300	297	295	290	286
28	284	282	279	277	275	273	271	270	266	267
30	261	259	256	254	252	250	248	247	244	246
32	241	239	236	234	232	230	228	227	224	226
34	224	221	219	216	214	212	211	209	207	209
36	209	206	204	201	199	197	195	194	191	193
38	195	192	190	187	185	183	182	180	177	179
40	183	180	178	175	173	171	169	168	165	167
44	162	159	157	154	152	150	148	147	144	146
48	144	141	139	136	134	133	131	130	127	129
52	129	126	124	121	120	118	116	115	112	114
56	116	114	112	109	107	106	104	102	99	102
60	105	103	101	98	96	95	93	92	89	91
64	95	93	91	88	87	85	84	82	79	81
68		84	83	80	78	77	75	74	71	73

XLC17000 HETB-360 Standard working condition goose head boom Lifting Performance Chart

245t turntable counterweight +95t car-body counterweight +310t reinforced counterweight

Radius	Main boom length (105m-132m) and the goose-head boom length 8m							
	105	108	111	114	117	120	123	126
17	343	333	323					
18	335	326	316	308	299	291	283	
19	328	318	309	302	293	285	279	272
20	320	311	303	296	287	279	274	267
21	313	305	296	290	281	274	268	262
22	306	298	290	283	276	268	263	257
23	299	291	283	277	270	263	257	252
24	292	285	277	271	264	257	252	247
25	285	278	271	266	259	252	247	242
26	279	272	265	260	253	247	241	237
28	265	260	253	249	243	236	231	227
30	244	241	239	238	232	227	222	218
32	225	223	221	220	218	216	212	209
34	207	206	204	204	202	200	197	197
36	192	190	189	189	188	185	183	183
38	178	176	175	175	174	172	170	170
40	166	164	162	163	161	160	158	158
44	145	143	141	142	140	139	137	138
48	127	126	124	125	123	121	120	120
52	112	111	109	110	108	107	105	105
56	100	98	97	97	96	94	92	93
60	89	88	86	87	85	83	82	82
64	80	78	77	77	76	74	72	73
68	71	70	68	69	67	66	64	64

XLC17000 SHB Lifting working range of heavy duty main boom under SL working condition



Description of combinations of heavy duty boom sections under SL working condition

Working condition	Boom section serial number											
	1	2	3	4	5	6	7	8	9	10	18	19
Name of boom sections	Boom Boom butt	12m transition section I	12M section A	12M section C	12M section B	3m section	6m section	12m center hitch section I	12M section D	12M section E	Heavy duty Boom head	Heavy duty Pulley block
Length m	10.5	12	12	12	12	3	6	12	12	12	1.5	0
48	1	1			1					1	1	2
54	1	1			1		1			1	1	2
60	1	1	1		1					1	1	2
66	1	1	1		1		1			1	1	2
72	1	1	1	1	1					1	1	2
78	1	1	1	1	1		1			1	1	2
84	1	1	1	2	1					1	1	2
90	1	1	1	2	1		1			1	1	2
93	1	1	1	2	1	1	1			1	1	2
96	1	1	1	2	1			1		1	1	2
99	1	1	1	2	1	1		1		1	1	2
102	1	1	1	2	1		1	1		1	1	2
105	1	1	1	2	1	1	1	1		1	1	2
108	1	1	1	3	1			1		1	1	2
111	1	1	1	3	1	1		1		1	1	2
114	1	1	1	3	1		1	1		1	1	2
117	1	1	1	3	1	1	1	1		1	1	2
120	1	1	1	3	1			1	1	1	1	2
123	1	1	1	3	1	1		1	1	1	1	2
126	1	1	1	3	1		1	1	1	1	1	2
129	1	1	1	3	1	1	1	1	1	1	1	2

Lifting performance table of XLC17000 heavy duty main boom under in SL working conditions SHB

(245t turntable counterweight + 95t car-body counterweight + 470t SL counterweight, SL counterweight radius 30m)

Radius	Boom length 99m									
	48	54	60	66	72	78	84	90	96	99
10	1250*	1060*	930*							
11	1250*	1060*	930*	849*	766*					
12	1250*	1060*	930*	849*	766*	680*	651*			
13	1250*	1060*	930*	849*	766*	680*	651*	591*	561*	
14	1250*	1060*	930*	849*	766*	680*	651*	591*	561*	531*
15	1250*	1060*	930*	849*	766*	680*	651*	591*	561*	531*
16	1152*	1060*	930*	849*	766*	680*	651*	591*	561*	531*
17	1079*	999*	930*	849*	766*	680*	651*	591*	561*	531*
18	1016*	939*	930*	849*	766*	680*	651*	591*	561*	531*
19	959*	886*	884*	849*	766*	680*	651*	591*	561*	531*
20	907*	839*	836*	834*	766*	680*	651*	591*	561*	531*
21	861*	796*	793*	791*	766*	680*	651*	591*	561*	531*
22	819*	757*	754*	752*	749*	680*	651*	591*	561*	531*
23	781*	721*	719*	716*	714*	680*	651*	591*	561*	531*
24	746*	688*	686*	683*	681*	678*	651*	591*	561*	531*
25	714*	658*	656*	653*	651*	648*	645*	591*	561*	531*
26	684*	630*	628*	626*	623*	620*	618*	591*	561*	531*
28	631*	581*	579*	576*	573*	571*	568*	565*	561*	531*
30	578*	538	536*	533*	531*	528*	526*	522*	520*	518*
32	528*	501	499	496	493*	491*	488*	485*	482*	481*
34	484*	468	466	463	461	458	455	452	450	448
36	444*	439	437	434	432	429	426	423	420	419
38	408*	413	411	408	405	403	400	397	394	392
40	375*	390	387	385	382	379	377	374	371	369
44	313*	348	347	344	342	339	336	333	331	329
48		297*	313	311	308	305	303	300	297	295
52			284	282	280	277	274	271	269	267
56				258	255	252	250	247	244	242
60					233	234	231	229	226	221

Notes:

- 1.The data marked with * indicates that the SL counterweight cannot be lifted off the ground at this time;
- 2.510t of counterweight for 48m SL heavy duty main boom with 1250t rated load;
- 3.The data in the table is for reference only and should be based on the data in the Instruction Manual.

Lifting capacity tables of heavy duty main boom under SL working conditions SHB

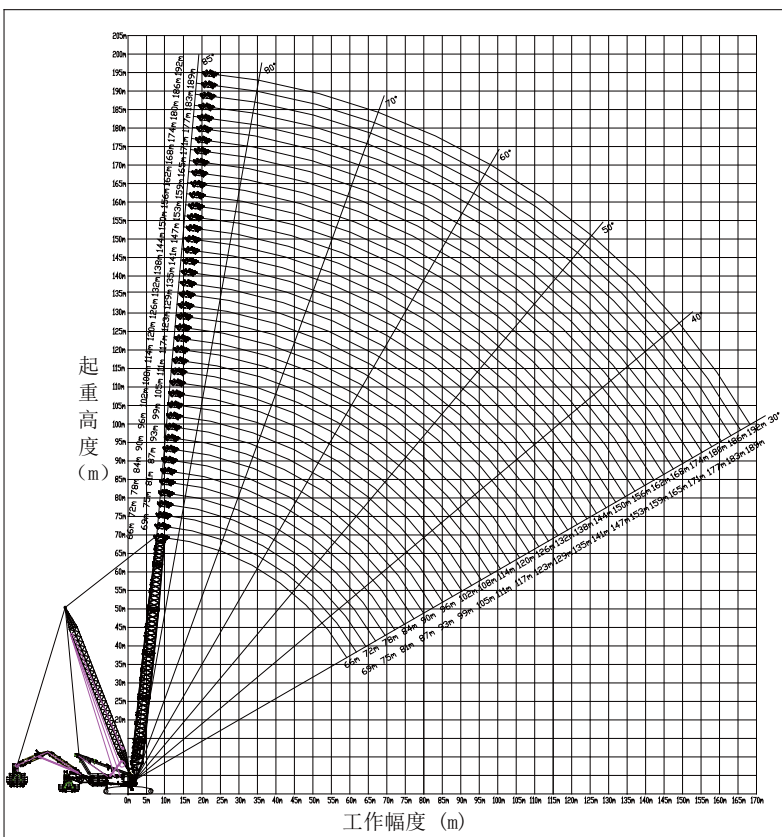
(245t turntable counterweight + 95t car-body counterweight + 470t SL counterweight, SL counterweight radius 30m)

Radius	Jib length 129m									
	102	105	108	111	114	117	120	123	126	129
14	500*	500*								
15	500*	500*	469*	469*	437*	437*				
16	500*	500*	469*	469*	437*	437*	437*	406*	406*	
17	500*	500*	469*	469*	437*	437*	437*	406*	406*	374*
18	500*	500*	469*	469*	437*	437*	437*	406*	406*	374*
19	500*	500*	469*	469*	437*	437*	437*	406*	406*	374*
20	500*	500*	469*	469*	437*	437*	437*	406*	406*	374*
21	500*	500*	469*	469*	437*	437*	437*	406*	406*	374*
22	500*	500*	469*	469*	437*	437*	437*	406*	406*	374*
23	500*	500*	469*	469*	437*	437*	437*	406*	406*	374*
24	500*	500*	469*	469*	437*	437*	437*	406*	406*	374*
25	500*	500*	469*	469*	437*	437*	437*	406*	406*	374*
26	500*	500*	469*	469*	437*	437*	437*	406*	406*	374*
28	500*	500*	469*	469*	437*	437*	437*	406*	406*	374*
30	500*	500*	469*	469*	437*	437*	437*	406*	404*	374*
32	479*	469*	460*	452*	437*	433*	425*	406*	404*	374*
34	446*	441*	433*	425*	417*	408*	400*	392*	384*	374*
36	417	415	409*	402*	394*	386*	378*	370*	363*	355*
38	391	389	388	381*	374*	365*	359*	351*	344*	337*
40	368	366	365	362	355*	347*	341*	333*	327*	320*
44	327	325	325	324	323	315	309*	303*	296*	290*
48	294	292	291	290	289	287	286	277	271	265*
52	265	263	263	262	261	259	258	256	255	253
56	241	239	238	238	236	234	234	232	230	228
60	220	218	217	217	215	213	212	211	209	207

Notes:

- 1.The data marked with * indicates that the SL counterweight cannot be lifted off the ground at this time;
- 2.The data in the table is for reference only and should be based on the data in the Instruction Manual.

Lifting working rang of XLC17000 heavy duty main boom under SL working condition SLB



Combination description of light duty main boom sections under SL working condition

Working condition	Boom section serial number	1	2	3	4	5	6	7	8	9	10	11	12	13	14	15	19
	Name of boom sections	Boom boom butt	12m transition section I	12m section A	12m section C	12m section B	3m section	6m section	12m center hitch section I	12m section D	12m section E	12m center hitch section II	12m section F	12m center hitch section III	12m transition section III	7.5m top section	Heavy-duty pulley block
	Length (m)	10.5	12	12	12	12	3	6	12	12	12	12	12	12	12	7.5	0
SL working condition Heavy duty boom	66	1	1								1				1	1	1
	72	1	1						1		1				1	1	1
	75	1	1				1	1			1				1	1	1
	78	1	1								1	1			1	1	1
	81	1	1				1			1	1				1	1	1
	84	1	1						1		1	1			1	1	1
	87	1	1				1	1			1	1			1	1	1
	90	1	1	1							1	1			1	1	1
	93	1	1	1		1	1					1			1	1	1
	96	1	1	1		1		1				1			1	1	1
	99	1	1	1		1	1	1				1			1	1	1
	102	1	1	1	1	1						1			1	1	1
	105	1	1	1	1	1	1					1			1	1	1
	108	1	1	1	1				1		1	1			1	1	1
	111	1	1	1	1		1	1			1	1			1	1	1
114	1	1	1	1	1					1	1			1	1	1	
117	1	1	1	1	1	1				1	1			1	1	1	
120	1	1	1	1	1		1			1	1			1	1	1	
123	1	1	1	1	1	1	1			1	1			1	1	1	
126	1	1	1	1	1				1	1	1			1	1	1	
129	1	1	1	1	1	1			1	1	1			1	1	1	
132	1	1	1	1	1		1	1	1	1	1			1	1	1	

Combination description of light duty main boom sections under SL working condition

Working condition	Boom section serial number	1	2	3	4	5	6	7	8	9	10	11	12	13	14	15	19
	Name of boom sections	Boom Boom butt	12m transition section I	12m section A	12m section C	12m section B	3m section	6m section	12m center hitch section L	12m section D	12m section E	12m center hitch section II	12m section F	12m center hitch section I	12m transition section III	7.5m top section	Heavy-duty pulley block
Length (m)	10.5	12	12	12	12	3	6	12	12	12	12	12	12	12	12	7.5	0
135	1	1	1	1	1	1	1	1	1	1	1			1	1	1	1
138	1	1	1	2	1				1	1	1			1	1	1	1
141	1	1	1	2	1	1			1	1	1			1	1	1	1
144	1	1	1	2	1		1	1	1	1	1			1	1	1	1
147	1	1	1	2	1	1	1	1	1	1	1			1	1	1	1
150	1	1	1	3	1				1	1	1			1	1	1	1
153	1	1	1	3	1	1			1	1	1			1	1	1	1
156	1	1	1	3	1		1	1	1	1	1			1	1	1	1
159	1	1	1	3	1	1	1	1	1	1	1			1	1	1	1
162	1	1	1	3	1				1	1	1	1		1	1	1	1
165	1	1	1	3	1	1			1	1	1	1		1	1	1	1
168	1	1	1	3	1		1	1	1	1	1			1	1	1	1
171	1	1	1	3	1	1	1	1	1	1	1			1	1	1	1
174	1	1	1	3	1				1	1	1	1	1	1	1	1	1
177	1	1	1	3	1	1			1	1	1	1	1	1	1	1	1
180	1	1	1	3	1		1	1	1	1	1	1	1	1	1	1	1
183	1	1	1	3	1	1	1	1	1	1	1			1	1	1	1
186	1	1	1	3	1				1	1	1	1	2	1	1	1	1
189	1	1	1	3	1	1			1	1	1	1	2	1	1	1	1
192	1	1	1	3	1		1	1	1	1	1	1	2	1	1	1	1
																	1

Lifting performance tables of light duty main boom under SLB working conditions SLB

(245t turntable counterweight + 95t car-body counterweight + 470t SL counterweight, SL counterweight radius 30m)

Radius	Boom length 120m																
	66	72	78	84	90	96	102	108	114	120							
11	550*																
12	550*	550*	550*														
13	550*	550*	550*	550*	525*												
14	550*	550*	550*	550*	525*	495*											
15	550*	550*	550*	550*	525*	495*	464*	433*									
16	550*	550*	550*	550*	525*	495*	464*	433*	402*								
17	550*	550*	550*	550*	525*	495*	464*	433*	402*	370*							
18	550*	550*	550*	550*	525*	495*	464*	433*	402*	370*							
19	550*	550*	550*	550*	525*	495*	464*	433*	402*	370*							
20	550*	550*	550*	550*	525*	495*	464*	433*	402*	370*							
21	550*	550*	550*	550*	525*	495*	464*	433*	402*	370*							
22	550*	550*	550*	550*	525*	495*	464*	433*	402*	370*							
23	550*	550*	550*	550*	525*	495*	464*	433*	402*	370*							
24	550*	550*	550*	550*	525*	495*	464*	433*	402*	370*							
25	550*	550*	550*	550*	525*	495*	464*	433*	402*	370*							
26	550*	550*	550*	550*	525*	495*	464*	433*	402*	370*							
28	550*	550*	550*	550*	525*	495*	464*	433*	402*	370*							
30	541*	539*	537*	534*	525*	495*	464*	433*	402*	370*							
32	504*	502*	500*	497*	495*	491*	464*	433*	402*	370*							
34	472*	469*	468*	465*	463*	459*	456*	433*	402*	370*							
36	443*	441*	439*	436*	434*	430*	428*	425*	402*	370*							
38	417*	415*	413*	411*	408*	404*	402*	400*	388*	370*							
40	394	392	390	387*	385*	381*	379*	376*	370*	356*							
44	354	352	350	348	345	341	339	337	334	324*							
48	321	319	317	314	312	308	306	303	301	298							
52	293	291	289	286	284	280	278	275	273	270							
56	269	267	265	262	260	256	254	251	249	246							
60		246	244	241	239	235	233	231	228	225							

Notes:
 1.The data marked with * indicates that the SL counterweight cannot be lifted off the ground at this time;
 2.The data in the table is for reference only and should be based on the data in the Instruction Manual.

Lifting performance table of light duty main boom under SL working condition SLB

(245t turntable counterweight + 95t car-body counterweight + 470t SL counterweight, SL counterweight radius 30m)

Radius	Boom length 120m									
	126	132	138	144	147	150	153	156	159	162
17	370*									
18	370*	338*	338*							
19	370*	338*	338*	306*	306*					
20	370*	338*	338*	306*	306*	306*	306*	273*		
21	370*	338*	338*	306*	306*	306*	306*	273*	273*	273*
22	370*	338*	338*	306*	306*	306*	306*	273*	273*	273*
23	370*	338*	338*	306*	306*	306*	306*	273*	273*	273*
24	370*	338*	338*	306*	306*	306*	306*	273*	273*	273*
25	370*	338*	338*	306*	306*	306*	306*	273*	273*	273*
26	370*	338*	338*	306*	306*	306*	306*	273*	273*	273*
28	370*	338*	338*	306*	306*	306*	306*	273*	273*	273*
30	370*	338*	338*	306*	306*	306*	306*	273*	273*	273*
32	370*	338*	338*	306*	306*	306*	306*	273*	273*	273*
34	370*	338*	338*	306*	306*	306*	306*	273*	273*	273*
36	370*	338*	338*	306*	306*	306*	306*	273*	273*	273*
38	345*	338*	338*	306*	306*	306*	298*	273*	273*	273*
40	314*	338*	333*	306*	306*	306*	298*	273*	267*	273*
44	264*	321	304*	287*	297*	289*	279*	272*	263*	273*
48	225*	291	279*	264*	272*	264*	256*	249*	241*	253*
52	195*	263	257	243*	246	243*	236*	230*	222*	233*
56	170*	230	236	226	210*	225	218	212*	206*	215
60	150*	201*	215	212	182*	210	202	197	191	199

Notes:

- 1.The data marked with * indicates that the SL counterweight cannot be lifted off the ground at this time;
- 2.The data in the table is for reference only and should be based on the data in the Instruction Manual.

Lifting performance table of light duty main boom under SL working condition SLB

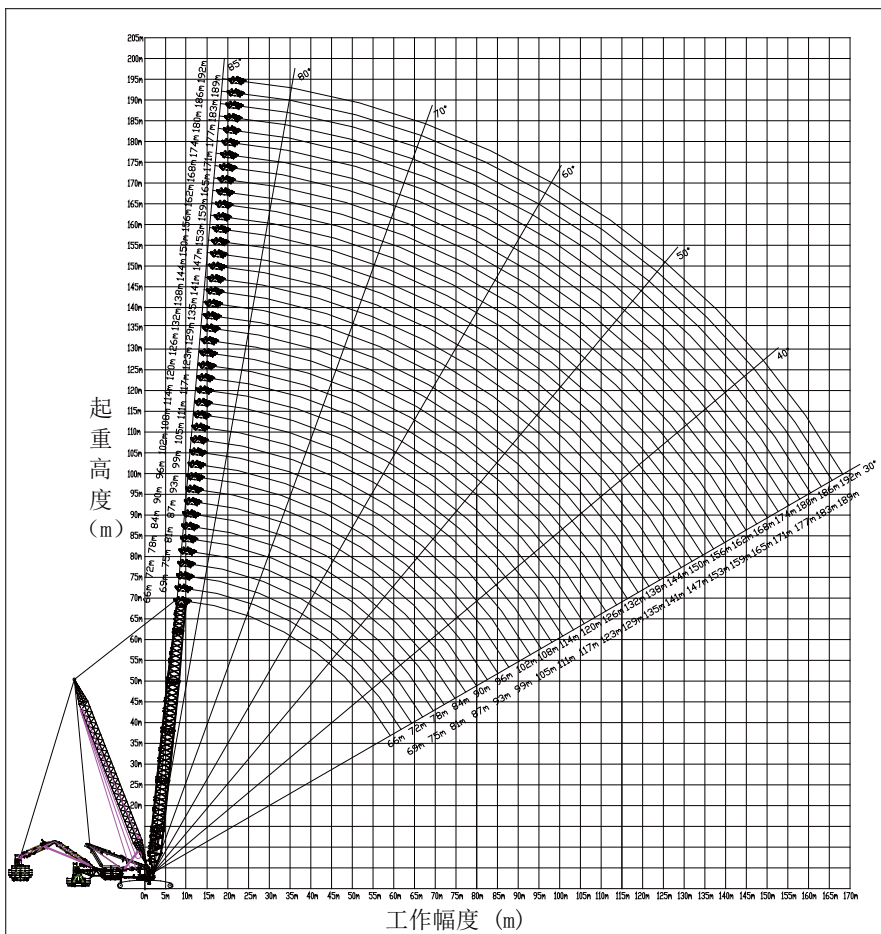
(245t turntable counterweight + 95t car-body counterweight + 470t SL counterweight, SL counterweight radius 30m)

Radius	Boom length 192m									
	165	168	171	174	177	180	183	186	189	192
21	273*									
22	273*	273*	240*	240*						
23	273*	273*	240*	240*	240*	241*	232*			
24	273*	273*	240*	240*	240*	241*	232*	219*	211*	203*
25	273*	273*	240*	240*	240*	241*	232*	219*	211*	203*
26	273*	273*	240*	240*	240*	241*	232*	219*	211*	203*
28	273*	273*	240*	240*	240*	241*	232*	219*	211*	203*
30	273*	273*	240*	240*	240*	240*	232*	218*	211*	203*
32	273*	273*	240*	240*	240*	240*	232*	218*	211*	203*
34	273*	273*	240*	240*	240*	240*	232*	218*	211*	203*
36	273*	273*	240*	240*	240*	240*	232*	218*	211*	203*
38	273*	273*	240*	240*	240*	240*	232*	218*	211*	203*
40	271*	263*	240*	240*	240*	240*	232*	218*	211*	203*
44	268*	259*	231*	234*	226*	218*	222*	218*	211*	203*
48	245*	237*	230*	234*	225*	218*	222*	203*	195*	189*
52	225*	218*	212*	215*	207*	201*	204*	203*	195*	189*
56	208*	202*	195*	199*	192*	185*	188*	188*	181*	175*
60	192	187*	181*	184*	178*	172*	174*	174*	168*	162*

Notes:

- 1.The data marked with * indicates that the SL counterweight cannot be lifted off the ground at this time;
- 2.The data in the table is for reference only and should be based on the data in the Instruction Manual.

Lifting working range of XLC17000 goose head boom under SL working condition SHETB



Combination description of the goose-head boom sections under SL working condition SHETB

Working condition	Boom section serial number	1	2	3	4	5	6	7	8	9	10	11	12	13	14	15	16/17	
	Name of boom sections	Boom butt	12m transition section I	12m section A	12m section C	12m section B	3m section	6m section	12m center hitch section I	12m section D	12m section E	12m center hitch section II	12m section F	12m center hitch section III	12m transition section III	7.5m top section	Heavy-duty pulley block	
	Length (m)	10.5	12	12	12	12	3	6	12	12	12	12	12	12	12	7.5	8	
SL working condition	66	1	1							1				1	1	1	1	
	69	1	1				1			1				1	1	1	1	
	72	1	1					1		1				1	1	1	1	
	75	1	1				1	1		1				1	1	1	1	
	78	1	1							1	1			1	1	1	1	
	81	1	1				1			1	1			1	1	1	1	
	84	1	1					1		1	1			1	1	1	1	
	87	1	1					1	1		1	1			1	1	1	1
	90	1	1	1						1	1				1	1	1	1
	93	1	1	1		1	1					1			1	1	1	1
SL working condition Heavy duty boom	96	1	1	1		1		1			1			1	1	1	1	
	99	1	1	1		1	1	1			1			1	1	1	1	
	102	1	1	1	1	1	1				1			1	1	1	1	
	105	1	1	1	1	1	1				1			1	1	1	1	
	108	1	1	1	1			1		1	1			1	1	1	1	
	111	1	1	1	1		1	1		1	1			1	1	1	1	
	114	1	1	1	1	1				1	1			1	1	1	1	
	117	1	1	1	1	1	1				1	1			1	1	1	1
	120	1	1	1	1	1		1		1	1			1	1	1	1	1
	123	1	1	1	1	1	1	1		1	1			1	1	1	1	1
	126	1	1	1	1	1				1	1	1			1	1	1	1
	129	1	1	1	1	1	1			1	1	1			1	1	1	1

Combination description of the goose-head boom sections under SL working condition SHETB

Working condition	Boom section serial number	1	2	3	4	5	6	7	8	9	10	11	12	13	14	15	16/17
	Name of boom sections	Boom Boom butt	12m transition section I	12m section A	12m section C	12m section B	3m section	6m section	12m center hitch section I	12m section D	12m section E	12m center hitch section II	12m section F	12m center hitch section II	12m transition section III	7.5m top section	Heavy-duty pulley block
	Length (m)	10.5	12	12	12	12	3	6	12	12	12	12	12	12	12	7.5	8
SL working condition	132	1	1	1	1	1		1	1	1	1			1	1	1	1
	135	1	1	1	1	1	1	1	1	1	1			1	1	1	1
	138	1	1	1	2	1			1	1	1			1	1	1	1
	141	1	1	1	2	1	1		1	1	1			1	1	1	1
	144	1	1	1	2	1		1	1	1	1			1	1	1	1
	147	1	1	1	2	1	1	1	1	1	1			1	1	1	1
	150	1	1	1	3	1			1	1	1			1	1	1	1
	153	1	1	1	3	1	1		1	1	1			1	1	1	1
	156	1	1	1	3	1		1	1	1	1			1	1	1	1
	159	1	1	1	3	1	1	1	1	1	1			1	1	1	1
	162	1	1	1	3	1			1	1	1	1		1	1	1	1
	165	1	1	1	3	1	1		1	1	1	1		1	1	1	1
	168	1	1	1	3	1		1	1	1	1	1		1	1	1	1
	171	1	1	1	3	1	1	1	1	1	1	1		1	1	1	1
	174	1	1	1	3	1			1	1	1	1	1	1	1	1	1
	177	1	1	1	3	1	1		1	1	1	1	1	1	1	1	1
	180	1	1	1	3	1		1	1	1	1	1	1	1	1	1	1
183	1	1	1	3	1	1	1	1	1	1	1	1	1	1	1	1	
186	1	1	1	3	1			1	1	1	1	2	1	1	1	1	
189	1	1	1	3	1	1		1	1	1	1	2	1	1	1	1	
192	1	1	1	3	1		1	1	1	1	1	2	1	1	1		
Heavy duty boom	132	1	1	1	1	1		1	1	1	1			1	1	1	1
	135	1	1	1	1	1	1	1	1	1	1			1	1	1	1
	138	1	1	1	2	1			1	1	1			1	1	1	1
	141	1	1	1	2	1	1		1	1	1			1	1	1	1
	144	1	1	1	2	1		1	1	1	1			1	1	1	1
	147	1	1	1	2	1	1	1	1	1	1			1	1	1	1
	150	1	1	1	3	1			1	1	1			1	1	1	1
	153	1	1	1	3	1	1		1	1	1			1	1	1	1
	156	1	1	1	3	1		1	1	1	1			1	1	1	1
	159	1	1	1	3	1	1	1	1	1	1			1	1	1	1
	162	1	1	1	3	1			1	1	1	1		1	1	1	1
	165	1	1	1	3	1	1		1	1	1	1		1	1	1	1
	168	1	1	1	3	1		1	1	1	1	1		1	1	1	1
	171	1	1	1	3	1	1	1	1	1	1	1		1	1	1	1
	174	1	1	1	3	1			1	1	1	1	1	1	1	1	1
	177	1	1	1	3	1	1		1	1	1	1	1	1	1	1	1
	180	1	1	1	3	1		1	1	1	1	1	1	1	1	1	1
183	1	1	1	3	1	1	1	1	1	1	1	1	1	1	1	1	
186	1	1	1	3	1			1	1	1	1	2	1	1	1	1	
189	1	1	1	3	1	1		1	1	1	1	2	1	1	1	1	
192	1	1	1	3	1		1	1	1	1	1	2	1	1	1		

Lifting performance table of XLC17000 goose head boom under SL working condition

(245t turntable counterweight + 95t car-body counterweight + 470t SL counterweight, SL counterweight radius 30m)

Radius	Main boom length (66m-120m) and the goose-head boom length 8m										
	66	72	78	84	90	96	102	108	114	120	
14	260*	260*									
15	260*	260*	260*								
16	260*	260*	260*	260*	260*						
17	258*	260*	260*	260*	260*	260*					
18	254*	257*	260*	260*	260*	260*	260*	260*			
19	251*	254*	257*	259*	260*	260*	260*	260*	260*	260*	
20	248*	251*	254*	257*	259*	260*	260*	260*	260*	260*	
21	245*	249*	251*	254*	256*	258*	260*	260*	260*	260*	
22	242*	246*	249*	251*	254*	256*	258*	260*	260*	260*	
23	237*	243*	246*	249*	251*	254*	256*	257*	259*	260*	
24	233*	239*	243*	247*	249*	251*	254*	255*	257*	258*	
25	230*	235*	240*	244*	247*	249*	251*	253*	255*	256*	
26	226*	232*	236*	241*	245*	247*	249*	251*	253*	255*	
28	219*	225*	230*	234*	239*	242*	245*	248*	249*	251*	
30	213*	218*	223*	228*	233*	237*	240*	243*	246*	248*	
32	207*	213*	218*	223*	227*	231*	235*	238*	241*	244*	
34	201*	207*	212*	217*	222*	226*	230*	233*	237*	240*	
36	196*	202*	207*	212*	217*	221*	225*	229*	232*	235*	
38	191*	197*	202*	207*	212*	217*	221*	224*	228*	231*	
40	187*	193*	198*	203*	208*	212*	216*	220*	223*	227*	
44	178*	184*	190*	195*	200*	204*	208*	212*	216*	219*	
48	171*	177*	182*	187*	192*	197*	201*	205*	209*	212*	
52	165*	171*	176*	181*	185*	190*	194*	198*	202*	206*	
56	160*	165*	170*	175*	179*	184*	188*	192*	196*	200*	
60	156*	160*	165*	170*	174*	178*	183*	186*	190*	194*	

Notes:

- 1.The data marked with * indicates that the SL counterweight cannot be lifted off the ground at this time;
- 2.The data in the table is for reference only and should be based on the data in the Instruction Manual.

Lifting performance table of XLC17000 goose head boom under SHETB-260 SL working condition

(245t turntable counterweight + 95t car-body counterweight + 470t SL counterweight, SL counterweight radius 30m)

Radius	Main boom length (126m-162m) and the goose-head boom length 8m									
	126	132	138	144	147	150	153	156	159	162
20	260*									
21	260*	260*	260*							
22	260*	260*	260*	260*	260*					
23	259*	260*	260*	260*	260*	260*	260*	260*	260*	
24	257*	259*	260*	260*	260*	260*	260*	260*	260*	260*
25	255*	258*	260*	260*	260*	260*	260*	260*	260*	260*
26	253*	256*	260*	260*	260*	260*	260*	260*	260*	260*
28	250*	252*	257*	259*	257*	257*	258*	259*	260*	257*
30	246*	249*	253*	255*	253*	254*	255*	256*	257*	254*
32	242*	245*	250*	252*	250*	251*	252*	253*	254*	251*
34	238*	241*	247*	249*	247*	248*	249*	250*	251*	248*
36	233*	237*	243*	246*	243*	245*	246*	247*	248*	245*
38	229*	233*	239*	242*	239*	240*	242*	244*	245*	241*
40	224*	228*	234*	238*	235*	237*	238*	240*	241*	237*
44	217*	221*	227*	230*	227*	229*	231*	233*	234*	230*
48	210*	214*	220*	223*	221*	222*	224*	226*	227*	223*
52	203*	207*	213*	217*	214*	216*	218*	219*	221*	217*
56	189*	201*	207*	211*	208*	210*	212*	213*	210*	211*
60	166*	196*	201*	205*	203	204	206	201	195*	206

Notes:

- 1.The data marked with * indicates that the SL counterweight cannot be lifted off the ground at this time;
- 2.The data in the table is for reference only and should be based on the data in the Instruction Manual.

Lifting performance table of XLC17000 goose head boom under SHETB-260 SL working condition

(245t turntable counterweight + 95t car-body counterweight + 470t SL counterweight, SL counterweight radius 30m)

Radius	Main boom length (165m-192m) and the goose-head boom length 8m									
	165	168	171	174	177	180	183	186	189	192
24	260*	260*								
25	260*	260*	247*	244*	238*					
26	260*	260*	247*	243*	238*	232*	223*	204*		
28	258*	259*	247*	242*	237*	231*	222*	203*	199*	194*
30	255*	256*	247*	241*	236*	231*	221*	202*	198*	194*
32	252*	253*	247*	240*	235*	230*	220*	201*	197*	193*
34	249*	250*	247*	239*	234*	229*	219*	199*	195*	192*
36	246*	247*	247*	237*	233*	228*	217*	197*	194*	190*
38	242*	244*	245*	237*	233*	227*	216*	196*	193*	189*
40	239*	240*	242*	237*	233*	227*	216*	196*	193*	188*
44	232*	233*	235*	232*	233*	221*	216*	196*	193*	188*
48	225*	227*	228*	218*	210*	203*	206*	191*	192*	188*
52	219*	220*	216*	218*	210*	203*	206*	185*	187*	176*
56	213*	206*	200*	203*	196*	189*	192*	179*	181*	176*
60	197	191*	185*	188*	182*	176*	178*	173*	172*	166*

Notes:

- 1.The data marked with * indicates that the SL counterweight cannot be lifted off the ground at this time;
- 2.The data in the table is for reference only and should be based on the data in the Instruction Manual.

XLC17000 SHETB-360 SL working condition goose head boom lifting performance table

(245t turntable counterweight + 95t car-body counterweight + 470t SL counterweight, SL counterweight radius 30m)

Radius	Main boom length (165m-192m) and the goose-head boom length 8m									
	66	72	78	84	90	96	102	108	114	120
14	360*	360*								
15	360*	360*	360*	360*						
16	360*	360*	360*	360*	360*					
17	360*	360*	360*	360*	360*	360*	360*			
18	360*	360*	360*	360*	360*	360*	360*	360*		
19	360*	360*	360*	360*	360*	360*	360*	360*	360*	360*
20	358*	360*	360*	360*	360*	360*	360*	360*	360*	360*
21	352*	358*	360*	360*	360*	360*	360*	360*	360*	360*
22	346*	354*	358*	360*	360*	360*	360*	360*	360*	360*
23	341*	350*	355*	359*	360*	360*	360*	360*	360*	360*
24	336*	346*	351*	355*	358*	360*	360*	360*	360*	360*
25	331*	343*	347*	348*	355*	358*	360*	360*	360*	360*
26	326*	339*	344*	345*	352*	355*	358*	360*	360*	360*
28	317*	332*	337*	342*	346*	349*	353*	355*	358*	360*
30	309*	326*	331*	336*	340*	344*	347*	350*	353*	355*
32	301*	319*	325*	330*	334*	338*	342*	345*	348*	350*
34	293*	311*	320*	325*	329*	333*	337*	340*	343*	346*
36	286*	304*	315*	319*	324*	328*	332*	335*	338*	341*
38	279*	297*	310*	315*	319*	324*	327*	331*	334*	337*
40	273*	290*	305*	310*	315*	319*	323*	326*	330*	333*
44	262*	277*	296*	302*	306*	311*	315*	319*	322*	325*
48	252*	266*	284*	294*	299*	303*	307	311	315	301
52	244*	257*	273*	287	292	297	301	304	295	292
56	237*	249*	264	276	286	277	274	272	269	266
60	233*	242	255	266	258	255	252	250	247	244

Notes:
 1.The data marked with * indicates that the SL counterweight cannot be lifted off the ground at this time;
 2.The data in the table is for reference only and should be based on the data in the Instruction Manual.

Lifting performance table of XLC17000 goose head boom under SHETB-360 SL working condition

(245t turntable counterweight + 95t car-body counterweight + 470t SL counterweight, SL counterweight radius 30m)

Radius	Main boom length (66m-120m) and the goose-head boom length 8m									
	126	132	138	141	144	147	150	153	156	159
20	355*	349*								
21	349*	349*	315*	315*						
22	349*	349*	315*	315*	315*	315*	282*			
23	349*	349*	315*	315*	315*	315*	282*	282*	282*	282*
24	349*	349*	315*	315*	315*	315*	282*	282*	282*	282*
25	349*	349*	315*	315*	315*	315*	282*	282*	282*	282*
26	349*	349*	315*	315*	315*	315*	282*	282*	282*	282*
28	349*	349*	315*	315*	315*	315*	282*	282*	282*	282*
30	344*	349*	315*	315*	315*	315*	282*	282*	282*	282*
32	338*	345*	315*	315*	315*	315*	282*	282*	282*	282*
34	330*	340*	315*	315*	315*	315*	282*	282*	282*	282*
36	329*	334*	315*	315*	315*	315*	282*	282*	282*	282*
38	321*	329*	315*	315*	306*	309*	282*	282*	282*	282*
40	314*	323*	315*	315*	306*	304*	282*	282*	277*	268*
44	301*	316*	307*	297*	289*	298*	282*	282*	274*	244*
48	253*	298	282*	274*	266*	275*	268*	259*	251*	244*
52	216*	275	260	253*	246*	254	247*	239*	232*	225*
56	187*	260	241	235	228	235	228	221	215*	208*
60	164*	233	235	218	212	206	212	206	200	193*

Notes:
 1.The data marked with * indicates that the SL counterweight cannot be lifted off the ground at this time;
 2.The data in the table is for reference only and should be based on the data in the Instruction Manual.

Lifting performance table of XLC17000 goose head boom under SHETB-360 SL working condition

(245t turntable counterweight + 95t car-body counterweight + 470t SL counterweight, SL counterweight radius 30m)

Radius	Main boom length (162m-189m) and the goose-head boom length 8m											
	3162	165	168	171	174	177	180	183	186	189	192	
14	360*	360*										
24	282*	284*	275*									
25	282*	284*	275*	247*	250*	243*						
26	282*	284*	275*	247*	250*	243*	235*	226*	213*	206*		
28	282*	284*	275*	247*	250*	243*	235*	226*	213*	206*	200*	
30	282*	284*	275*	247*	250*	243*	235*	226*	212*	206*	200*	
32	282*	284*	275*	247*	250*	243*	235*	226*	211*	206*	200*	
34	282*	284*	275*	247*	250*	243*	235*	226*	209*	206*	200*	
36	282*	282*	275*	247*	248*	243*	235*	226*	207*	204*	200*	
38	279*	279*	275*	247*	247*	243*	235*	224*	204*	202*	200*	
40	275*	275*	265*	247*	244*	243*	235*	224*	204*	202*	200*	
44	266*	249*	241*	233*	237*	227*	220*	218*	198*	198*	197*	
48	258*	247*	240*	232*	216*	208*	201*	204*	191*	192*	192*	
52	236*	228*	221*	214*	216*	208*	201*	204*	185*	181*	174*	
56	218	211*	204*	198*	201*	194*	187*	190*	179*	181*	174*	
60	202	195	189*	183*	187*	180*	174*	176*	173*	170*	164*	

Notes:

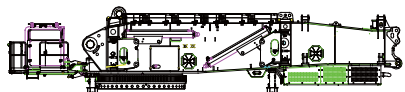
- 1.The data marked with * indicates that the SL counterweight cannot be lifted off the ground at this time;
- 2.The data in the table is for reference only and should be based on the data in the Instruction Manual.

40

XLC17000 CRAWLER CRANE

P40-P51 Reference transportation parameters

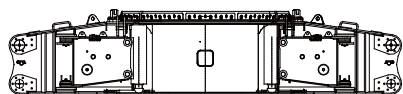
Reference transportation parameters



Basic crane I ×1

L	15.73 m
W	4.19 m
H	3.4 m
W	81 t

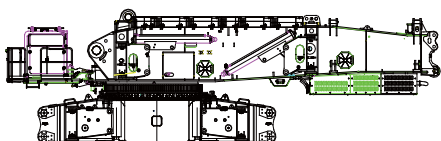
合
Includes self-dis/assembly cylinder for basic crane, outrigger pads



Basic crane II ×1

L	8.620 m
W	3.746 m
H	1.875 m
W	41 t

包
Includes car-body outrigger cylinder, outrigger pads



Basic crane I + Basic crane II ×1

L	15.73 m
W	4.19 m
H	4.832 m
W	122 t

Excluding hoisting winch mechanism



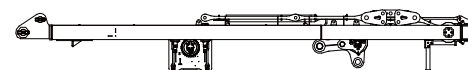
Left track frame ×1

L	13.337 m
W	1.5 m
H	2.035 m
W	54.6 t



Right track frame ×1

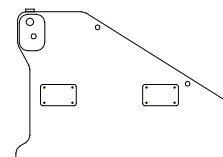
L	13.337
W	1.5
H	2.035
W	55



Mast component ×1

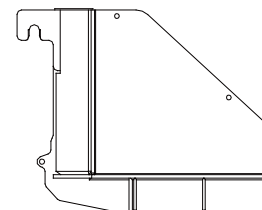
L	16.47
W	3.12
H	1.668
W	32.8

Contains mast, main luffing mechanism, main luffing pulley block, self-dis/assembly cylinder, partial pendants, etc.



Car-body counterweight frame ×2

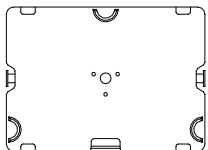
L	3.79
W	2.63
H	1.77
W	17.5



untable counterweight ×2

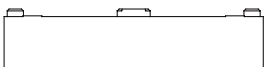
L	4.25
W	3.00
H	2.36
W	12.8

Reference transportation parameters



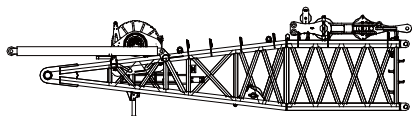
Counterweight block 10t		×76
L	2.75 m	
W	2.0 m	
H	0.63 m	
W	10 t	

Includes self-dis/assembly cylinder for basic crane, outrigger pads



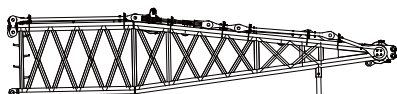
Counterweight block 5t		×8
L	2.75 m	
W	2.0 m	
H	0.25 m	
W	5 t	

Includes car-body outrigger cylinder, outrigger pads

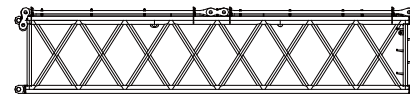


SL Mast butt		×1
L	13.5 m	
W	3.75 m	
H	3.65 m	
W	37.28 t	

Excluding hoisting winch mechanism

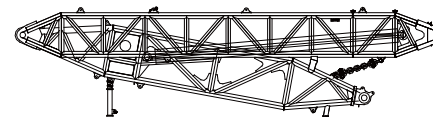


Raise the mast tip		×1
L	12.71 m	
W	3.49 m	
H	2.86 m	
W	20.1 t	

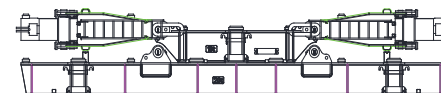


SL mast 12m section		×2
L	12.25 m	
W	3.49 m	
H	2.63 m	
W	12.9 t	

Includes pendants on boom

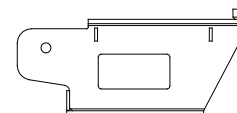


SL pushing device		×1
L	11.2 m	
W	3.5 m	
H	2.81 m	
W	21.6 t	



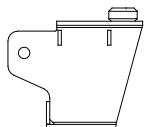
SL counterweight tray		×1
L	11.6 m	
W	3.0 m	
H	1.77 m	
W	33 t	

Includes 6 pieces of support block, raising cylinder and its support

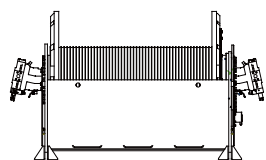


Small tray support block		×2
L	1.62 m	
W	1.05 m	
H	0.73 m	
W	0.83 t	

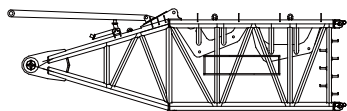
Reference transportation parameters



Large tray support block		× 4
L	0.815	m
W	0.72	m
H	0.73	m
W	0.3	t

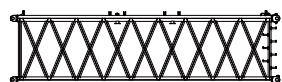


Hoist mechanism		× 2
L	2.6	m
W	1.48	m
H	1.41	m
W	11.2	t



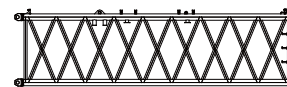
Boom butt		× 1
L	10.885	m
W	3.29	m
H	3.408	m
W	23.5	t

Without winch



1776-GD12-1

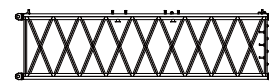
12m boom transition section		× 1
L	12.28	m
W	4.17	m
H	3.25	m
W	15.1	t



1776-ZB12-2

12m boom section A-40		× 1
L	12.28	m
W	4.173	m
H	3.3	m
W	15.41	t

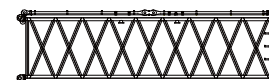
Excluding pendant



1776-ZB12-4

2m boom section C-40		× 1
L	12.28	m
W	4.173	m
H	3.3	m
W	15.24	t

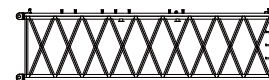
Excluding pendant



1776-ZB12-4

12m boom section C-40		× 2
L	12.28	m
W	4.173	m
H	3.3	m
W	16.8	t

Including pendant

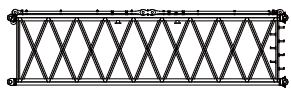


1776-ZB12-3

2m boom insert B-40		× 1
L	12.28	m
W	4.173	m
H	3.3	m
W	15.77	t

Excluding pendant

Reference transportation parameters

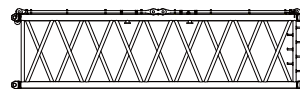


1776-ZB12-5

主臂12米腰绳节I-40/12m boom section B ×1

长(L)	12.28	m
宽(W)	4.173	m
高(H)	3.3	m
重量(W)	16.8	t

含相应拉板
Including corresponding pendants

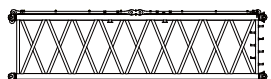


1776-YS12-14

主臂12米腰绳节II-20/12m boom center hitch section II-20 ×1

长(L)	12.28	m
宽(W)	4.173	m
高(H)	3.3	m
重量(W)	11.9	t

不含拉板
Excluding pendant



1776-ZB12-6

主臂12米节D-32/12m boom section D-32 ×1

长(L)	12.28	m
宽(W)	4.173	m
高(H)	3.3	m
重量(W)	15.0	t

含相应拉板
Including corresponding pendants

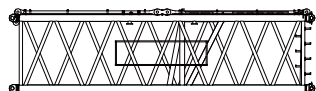


1776-ZB3-7

主臂3米节-40/3m boom section B ×1

长(L)	3.28	m
宽(W)	4.173	m
高(H)	3.3	m
重量(W)	5.3	t

不含拉板
Excluding pendant

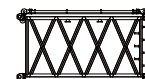


1776-ZB12-9

主臂12米节E-25/12m boom section E-25 ×1

长(L)	12.28	m
宽(W)	4.173	m
高(H)	3.3	m
重量(W)	15.3	t

含相应拉板
Including corresponding pendants

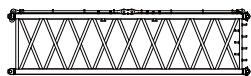


1776-ZB6-8

主臂6米节/6m boom section ×2

长(L)	6.28	m
宽(W)	4.173	m
高(H)	3.3	m
重量(W)	9.0	t

含拉板
Including pendant

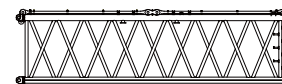


1776-ZB12-10

主臂12米节F-20/12m boom section F-20 ×2

长(L)	12.28	m
宽(W)	4.173	m
高(H)	3.3	m
重量(W)	15.3	t

含相应拉板
Including corresponding pendants



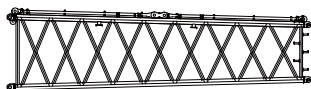
1776-GD12-11

主臂12米过渡节II-20/12m boom transition section II-20 ×1

长(L)	12.26	m
宽(W)	4.173	m
高(H)	3.3	m
重量(W)	11.5	t

不含拉板
Excluding pendant

Reference transportation parameters

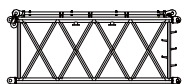


1776-GD12-12

主臂12米过渡节III/12m boom transition section ×1

长(L)	12.26	m
宽(W)	3.75	m
高(H)	3.3	m
重量(W)	9.2	t

含相应拉板
Including corresponding pendants

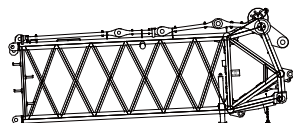


1776-TB6-2

塔臂6米节 (选配) /6m tower jib insert D (optional) ×1

长(L)	6.23	m
宽(W)	2.74	m
高(H)	2.69	m
重量(W)	5.22	t

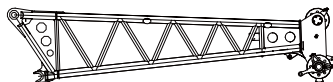
含相应拉板
Including corresponding pendants



风电主臂7.5米顶节/Wind power 7.5m boom top ×1

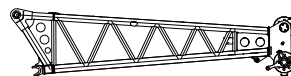
长(L)	8.590	m
宽(W)	2.77	m
高(H)	3.49	m
重量(W)	12.0	t

含相应拉板
Including corresponding pendants



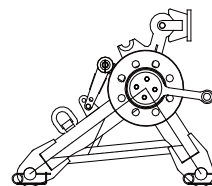
鹅头臂-260 (选配) /Goose head boom - 260 (Optional) ×1

长(L)	8.33	m
宽(W)	2.32	m
高(H)	1.92	m
重量(W)	6.8	t



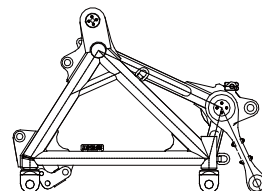
鹅头臂-360/Goose Head section-360 ×1

长(L)	8.3	m
宽(W)	2.62	m
高(H)	1.94	m
重量(W)	9.0	t



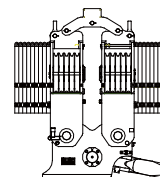
臂头滑轮组/Boom head pulley block A ×2

长(L)	1.56	m
宽(W)	2.3	m
高(H)	1.44	m
重量(W)	2.5	t



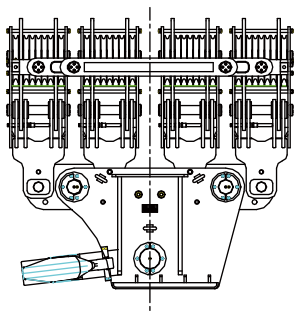
主臂重型臂头/Main boom heavy duty boom head ×1

长(L)	3.98	m
宽(W)	4.38	m
高(H)	2.91	m
重量(W)	9.1	t

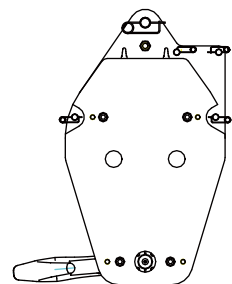


300t吊钩 (可拆为150t吊钩) /300t hook (can be removed as 150t hook) ×1

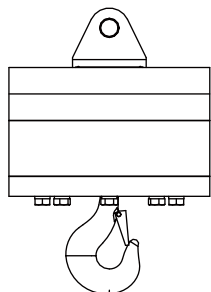
长(L)	2.352	m
宽(W)	1.183	m
高(H)	2.58	m
重量(W)	11.6	t



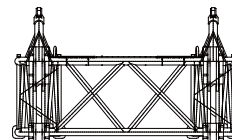
800t吊钩/800t capacity hook block	× 1
长(L)	4.846 m
宽(W)	3.77 m
高(H)	1.09 m
重量(W)	20.88 t



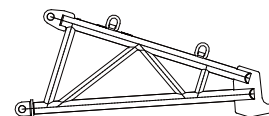
50t吊钩/50t capacity hook block	× 1
长(L)	1.01 m
宽(W)	0.64 m
高(H)	1.32 m
重量(W)	2.5 t



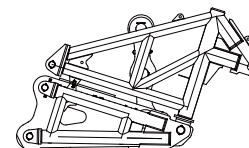
16t吊钩/16t capacity hook block	× 1
长(L)	0.6 m
宽(W)	0.6 m
高(H)	0.87 m
重量(W)	0.88 t



超起推移支架/SL pushing bracket	× 1
长(L)	4.17 m
宽(W)	2.975 m
高(H)	2.44 m
重量(W)	3.4 t



悬停支架 (选配) /Suspension bracket (optional)	× 2
长(L)	3.56 m
宽(W)	0.97 m
高(H)	1.44 m
重量(W)	0.97 t



增强平衡重支架/Reinforced counterweight frame	× 1
长(L)	3.66 m
宽(W)	3.49 m
高(H)	2.45 m
重量(W)	11.4 t



12m风电副臂 (选配) /12m Wind power jib (Optional)	× 1
长(L)	12.771 m
宽(W)	2.54 m
高(H)	2.679 m
重量(W)	6.144 t

含相应拉板
Including corresponding pendants