



Hydraulic Excavators **XE310LC**



XCMG MINING EQUIPMENT AUSTRALIA PTY LTD
Add:31-33 Westpool drive, Hallam, Vic,3803,Australia
Phone: +61 0411 591 394
Email: royrossini@xcmg.com
xcmgaustralia@xcmg.com

XUZHOU CONSTRUCTION MACHINERY GROUP IMP.& EXP.CO., LTD
Add:NO.1,Tuolanshan Road, Xuzhou Economic Developing Zone,Jiangsu,
China 221004
Tel: +86 (0) 516 8773 9228
Fax: +86 (0) 516 8773 9230
E-mail: royrossini@xcmg.com xcmgaustralia@xcmg.com

www.xcmg.com
Specifications and designs are subject to change without notice. Machines shown may include optional equipment.
HWA310-10-24-12

Rated power: 202 kW
Operating weight: 34 T
Bucket capacity: 1.4 m³



300+ Overseas Dealer
2000+ Overseas Service Network
40 Overseas Office
30 Overseas Company
15+ Overseas Manufacturing Base and KD Factory
6 Global R&D Center



INTRODUCTION OF XCMG

Founded in 1943, XCMG is a multinational corporation with the most comprehensive range of competitive, influential products in the construction machinery industry. Our business covers eight key areas: construction machinery, heavy trucks, mining machinery, sanitation machinery, machinery components, construction, finance, and the ICT industry. XCMG has established a global R&D network with a total of 6 centers around the world, the US, Germany, Brazil, India and Australia R&D centers, with the China national technology center as its core. In addition to a number of manufacturing bases in China, there are the US, Germany, Netherlands, Poland, Austria, Brazil, India, and Uzbekistan manufacturing bases. XCMG possess two complete machine brands (XCMG, Schwing), and several component brands including FT and AMCA. The strength of this global R&D network and the manufacturing operations have made XCMG the industry-leading global construction equipment manufacturer by today. For more than 30 years, XCMG has been sowing the seeds of overseas development as the No. 1 exporter in China's construction machinery industry. Today, we have 40 overseas offices and 300+ overseas dealers in 190+ countries and regions worldwide and are still growing rapidly.

XCMG IN AUSTRALIA

Since its foundation in 2006, XCMG is gradually establishing a complete network including: local distribution, supply chain management and an integrated customer services and training. Nowadays, with one headquarter in Melbourne, XCMG Australia has established professional dealers in every state focusing on construction equipment business. Meanwhile, XCMG has deep connections with mining giants like Rio Tinto, BHP and MMG in Australia.

Our local professional team and cutting-edge innovation platform guarantee that our products are carefully crafted to the smallest detail according to the diverse needs of Australian customers.



Custom Cummins engine, Large displacement motor + large speed ratio reducer, output torque increased by 15%, large torque, sufficient strength, good starting ability; High gear meshing, small rotation drift, more stable parking. Light control handle, torque reduction by 15%, small damping, labor saving, can alleviate the wrist fatigue caused by long-term operation.

Electrically controlled positive flow system, multi-tool hydraulic system is more accurate, pressure flow is adjustable, matching large displacement main pump, to achieve on-demand pump accurate control, fast response speed; the system has small throttling loss, small pressure loss, sensitive action, soft micro-control.

Boom buffer flexible control, boom control oil circuit set buffer flexible control valve group, spool open and close gently, reduce the impact of action; compound operation is smoother and softer.

Multi-function machine intelligent control system, ATT1 ~ ATT8 multi-tool mode to meet different machine operation options.





More Economical and Efficient

► More energy-saving and environment-friendly

Optimized fuel consumption

XCMG customized large displacement engine, low speed and high torque, to achieve accurate matching with the hydraulic system, optimize the fuel consumption rate, taking into account various working condition fuel economic efficiency, saving every drop of fuel, the same Working Condition fuel consumption reduced by more than 5 %.

Electrically controlled positive flow system

Realized on-demand pump accurate control, fast response speed; the system has small throttling loss, small pressure loss, sensitive action, soft micro-control.



► More Efficient Return

Upgraded the PTO pump scheme

Improved the controllability of the rotating or tipping bucket compound action, the linear walking ability while tool working is guaranteed, and satisfactory to the functional modification requirements of customers.



High-efficiency fuel injection system

The fuel injection system developed for oil products has improved fuel adaptability and low maintenance cost;

Large-flow and high-efficiency air filter

The use of large flow and high efficiency air filter can effectively reduce the content of impurities entering the engine, the intake is efficient, the engine is fully burned, and the engine is high efficiency.



More Comfortable and Safe

New generation cab, more comfortable

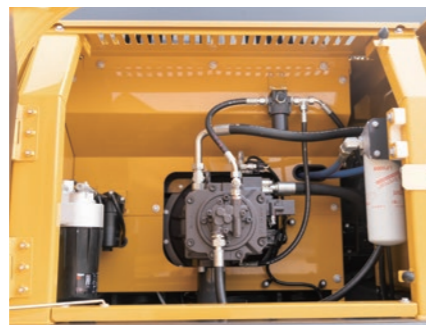
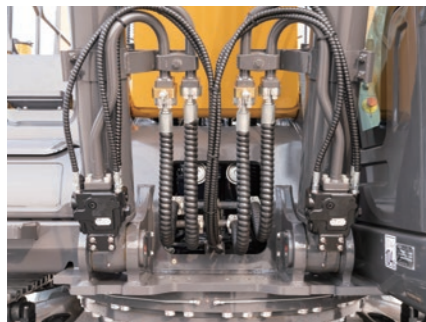
- 1 Luxury large size seat, length widened/lengthened by 8%, back tilt adjusted to 10°, greatly improved riding comfort; Dual shock absorption design reduces seat vibration by 50%.
- 2 Sealed positive pressure cab, eliminate dust intrusion, reduce noise by 1.5 dB, and make the working environment more refreshing and quiet.
- 3 The operation force of the handle is reduced by 30%, and the operation is more comfortable and labor-saving for a long time.
- 4 Special-shaped foot pedal, the fit degree of the foot sole increases by 15%.
- 5 The front side of the cab anti-ultraviolet filter glass, the side and the back filter colored glass, avoid sunlight exposure, relieve eye fatigue.
- 6 High-power automatic heating and cooling air conditioning, air volume increased by 25%; cooling effect increased by 20%. Three-dimensional surround air supply, indoor temperature difference is small, body feeling is more comfortable.
- 7 Enlarged luxury cab, the operation space is increased by 5%, and the operation keys are within reach; Rich configuration, water cup holder, storage box, backup power supply, USB port, AUX port, etc. are available.



- Air filter, water radiator, oil radiator, battery and switch are centrally arranged on the left side, with moderate position, large operating space, convenient and fast maintenance; Window screen type detachable air intake filter, filter effect is good, easy to clean.
- Fuel filter, oil filter, pilot filter and post-processing device are centrally arranged on the right side, with large operating space and convenient maintenance.
- The air conditioning condenser adopts the articulated rotatable installation structure, which makes refrigerant filling and filter cleaning more convenient. Batteries and electrical boxes are centrally arranged in the empty filter chamber for more convenient maintenance.



Centralized lubrication of rotary mechanism.



Series-parallel connection split type independent radiator.



Air conditioning filter element repair port.



Large engine hood, opening Angle 75°, large engine room maintenance space.



External fuel switch ball valve and drain valve, easy to operate.



Air filter maintenance space is open, side door can be opened separately, easy maintenance.



■ Engine

	XE310LC
Engine brand/model	QSL9
Rated power/rpm	202/2,100 kW/rpm
Direct injection	√
Electric injection	√
4-stroke	√
Water-cooled	√
Turbocharged	√
Air-to-Air intercooling	√
Stroke	145 mm
Cylinder bore	114 mm
Number of cylinders	6
Maximum torque/rpm	1,230/1,300 N·m/rpm
Displacement	8.9 L

■ Hydraulic system

	XE310LC
Main pump	2 x variable pumps
Pilot pump	1 x Gear pump
PTO pump	1 x Gear pump
Maximum flow rate of main system	2×306 L/min
PTO pump flow rate	51 L/min
Main system pressure	34.3 Mpa
Main system pressure (power-max pressure)	37 Mpa
Pilot system pressure	3.9 Mpa
PTO pump pressure	24 Mpa
Travel system pressure	35 Mpa
Swing system pressure	25.5 Mpa
AUX1 Breaking flow	300 L/min
AUX1 Two-way flow	460 L/min
AUX2 Flow	45 L/min

■ Oil capacity

	XE310LC
Fuel tank capacity	520 L
DEF tank capacity	48 L
Hydraulic oil tank capacity	270 L

■ Main performance

	XE310LC
Travel speed (high/low)	5.4/3.2 km/h
Swing speed	10.5 r/min
Maximum swing torque	105 kN·m
Gradeability	35° (70%)
Ground specific pressure	63 kpa
Bucket digging force (SAE)	184.9 kN
Bucket digging force (ISO)	166.7 kN
Arm digging force (SAE)	141.9 kN
Arm digging force (ISO)	139.1 kN
Maximum traction force	297.4 kN

■ Track

	XE310LC
Standard track shoes width	600 mm
Number of track shoes (per side)	49
Number of track roller (per side)	9
Number of track carrier roller (per side)	2

■ Cab standard

	XE310LC
ISO 10262: 1998 (OPG)	√
ISO 12117-2: 2008 (ROPS)	√



REFLECTIVE TAPE



FULL FRONT GUARD AND TOP GUARD



STANDARD REAR AND RIGHT SIDE CAMERAS



STANDARD LED LIGHTS



SUNROOF, SUNROOF CURTAIN AND FRONT CURTAIN



STANDARD BOOM AND ARM ANTI-DROP VALVES



AM/FM BLUETOOTH (HANDS-FREE) RADIO



POWERFUL AC



HANDRAILS AND GUARD RAILS



AUX 1 AND AUX 2 AUXILIARY PIPES



ACCESSABLE EMERGENCY STOP BUTTONS

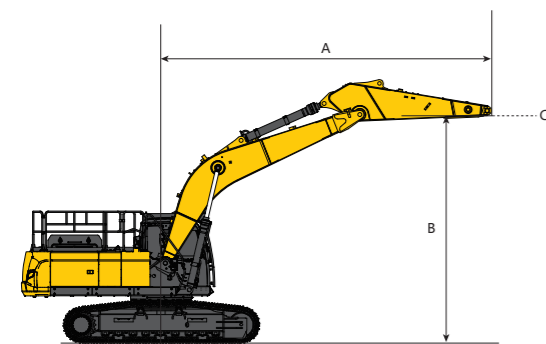


REAR VIEW MIRROR



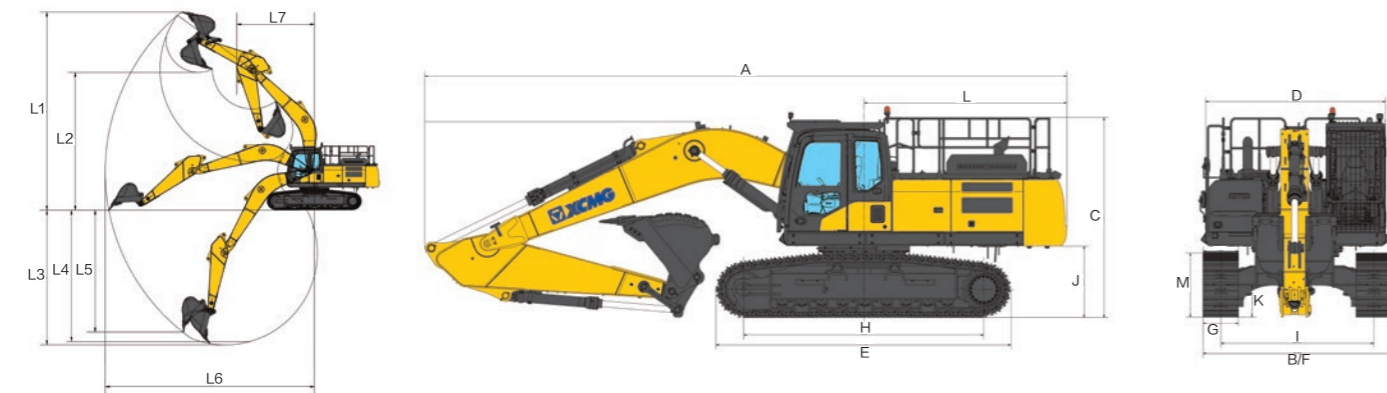
XE310LC

Lifting point height	1.5 m		3.0 m		4.5 m		6.0 m		7.5 m		9 m		Lifting capacity		Lifting radius	
7.5 m														*6,210	5,750	7.4 m
6.0 m														*5,960	4,710	8.3 m
4.5 m							*8,420	7,640	*7,590	5,470				*5,940	4,170	8.9 m
3.0 m					*13,030	10,800	*9,820	7,210	*8,290	5,260	6,780	4,020		*6,120	3,880	9.2 m
1.5 m					*15,440	10,030	*11,120	6,820	8,700	5,050	6,670	3,920		6,430	3,780	9.2 m
Grounding			*7,460	*7,460	*16,490	9,670	11,850	6,560	8,520	4,900	6,600	3,860		6,580	3,850	9.0 m
-1.5 m			*13,790	*13,790	*16,410	9,580	11,720	6,450	8,450	4,830				7,090	4,120	8.5 m
-3.0 m			*21,470	*21,470	*15,350	9,670	*11,590	6,480	8,510	4,880				8,190	4,720	7.7 m
-4.5 m			*17,630	*17,630	*12,980	9,940	*9,620	6,680						*8,560	6,110	6.5 m



: Over front
 : Over side or 360°

A- Reach from swing centerline to arm top
 B- Arm top height above/below ground
 C- Lift point
 The mass of slings and any auxiliary, lifting devices shall be deducted from the rated load to determine the net load that may be lifted. Lift capacities are based on the machine standing on a firm, uniform supporting surface. The user shall make allowances for job conditions such as soft or uneven ground. The operator should be fully acquainted with the operator's manual and the operating safety manual furnished by the manufacturer before operating the machine.



Working scope

	XE310LC	
L1	Maximum digging height	10,350 mm
L2	Maximum unloading height	7,200 mm
L3	Maximum digging depth	7,040 mm
L4	8 ft. level floor digging depth	7,106 mm
L5	Maximum vertical digging depth	6,350 mm
L6	Maximum reach	10,900 mm
L7	Minimum swing radius	4,125 mm

Overall dimensions

	XE310LC	
A	Overall length	10,763 mm
B	Overall width	3,190 mm
C	Overall height	3,440 mm
D	Width of platform	3,050 mm
E	Track length	4,945 mm
F	Chassis width (extended/retracted)	3,190 mm
G	Standard track shoe width	600 mm
H	Track wheelbase	4,028 mm
I	Gauge	2,590 mm
J	Counterweight ground clearance	1,200 mm
K	Minimum ground clearance	540 mm
L	Tail Swing Radius	3,398 mm
M	Track height	1,082 mm

Standard and optional equipment

WORK EQUIPMENT

6.15 m boom	●
3.2 m arm	●

OTHER EQUIPMENT

5.75 T counterweight	●
Boxing rings	●
Manual centralized lubrication system	●
Breaker 1: triangular breaker	○

CABIN

Cab	●
Deluxe seat (air suspension, heated seat)	●
Cab front semi-guard	○
Cab front full-guard(standard)	●
AM/FM bluetooth radio (standard)	●
DAB bluetooth radio	○

UNDERCARRIAGE

Undercarriage : track length 4635 mm, track gauge 2590 mm	●
Track 1: 600 mm triple grouser shoes (standard)	●
Track 2: 700 mm triple grouser shoes	○
Track 3: 800 mm triple grouser shoes	○
Track 4: 600 mm double grouser shoes	○

HYDRAULICS

Auxiliary piping (single/double-acting, switchable, high flow)	●
Auxiliary piping (double way, for rotating or tilting tool, low flow)	●
Quick coupler piping	●
Left electric proportional joystick	●
Right electric proportional joystick	●
Arm cylinder safety valve	●
Boom cylinder safety valve	●
PTO (Power Take Off) pump	●

ATTACHMENTS

General duty bucket 1: capacity 1.8 m ³ , width 1503 mm, weight 1452 kg	○
Heavy duty bucket 1: capacity 1.6 m ³ , width 1444 mm, weight 1440 kg	○
Rock duty bucket 1: capacity 1.4 m ³ , width 1220 mm, weight 1371 kg (standard)	●

ELECTRIC

Travel alarm	●
Rotating warning beacon	●
Rearview camera	●
Right-side-view camera	●
Displayer languages: Chinese, English, Russian, Portuguese, Spanish, French, Italian, German, Turkish, Norwegian	●

● - Standard configuration ○ - Optional

Optimum services , XCMG Guaranteed



XCMG-approved attachments



Genuine parts



Extension of warranty



Financial solutions



Maintenance contract



Telematics

Professional Integrated Complete Solutions

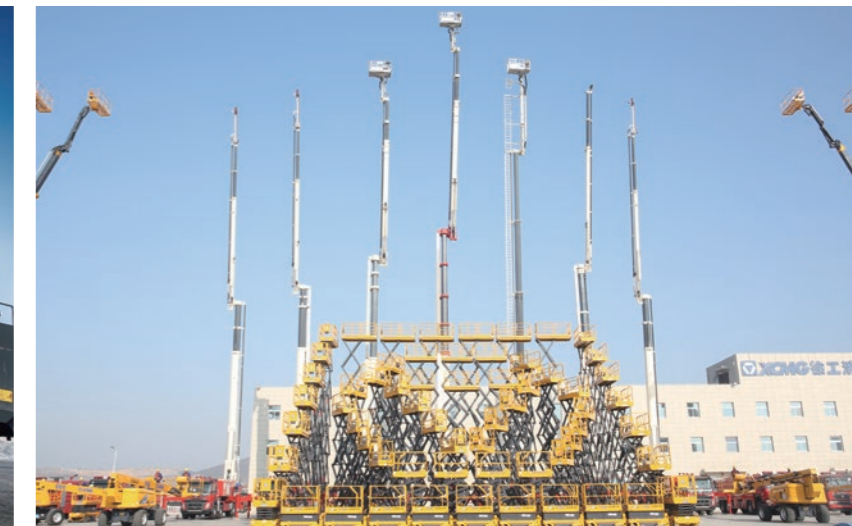
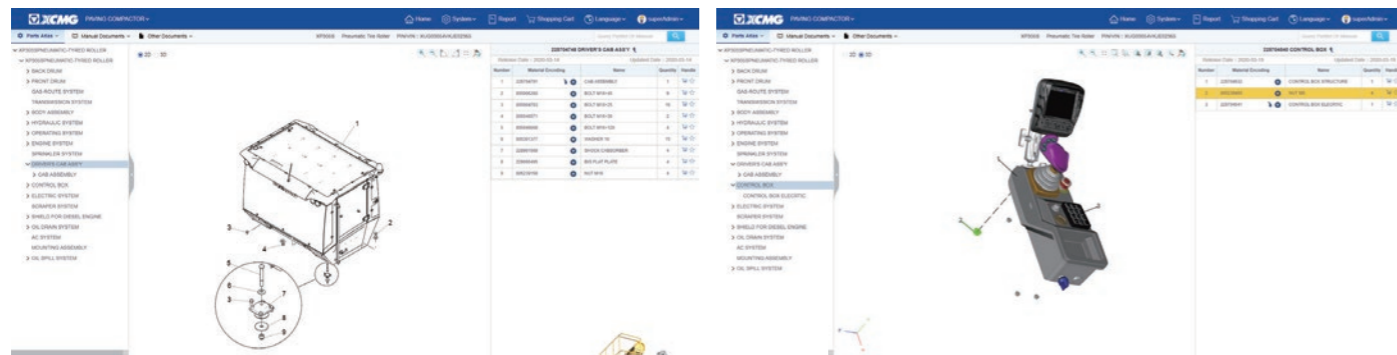
The XCMG group has built a strong reputation based on the quality, reliability and durability of its construction machinery. What's more, XCMG has gradually established a service network to constantly provide its local integrated and highly efficient complete solutions for all customers.

Full Range of Services Ready for you

In order to respond to your needs as fast as possible, XCMG experts are on their way to your job site from one of our facilities near you. Full range of services are available in order to reduce your total cost of ownership and increase your revenue.



XCMG Global Spare Parts System



Mobile cranes



Excavators



Aerial work platforms



Wheel loaders



Road machinery

