



SOLID
TO SUCCEED

AS

ARTICULATED BOOM LIFT XGA20K

Comply with AS

Standard configuration

- Dual-entry platform with full-open gate
- Cold start components
- Engine air pre-filter assembly
- Engine condition monitoring and start protection device
- 4-wheel drive
- Axle oscillation
- Lowering and motion alarm
- Tilt alarm
- Overload alarm
- Emergency stop devices on platform and chassis
- Emergency power unit
- Axle oscillation pressure detection system
- 4-wheel braking system
- Platform auto leveling
- Proportional joystick control
- Drive enable
- Lockable engine hood
- Full-speed traveling motor
- Telematics front-end interface
- Anti-entrapment protection device
- Hydraulic oil cooler
- Thumb rocker steering



Working height
20.63 meters



Lift capacity
256/350Kg



Diesel
power



Optional configuration

- Gray filled-type tires 936mm×360mm
- Solid tires 915mm×326mm
- Platform power
- Air pipe connected to platform option
- Tool tray
- Working light assembly
- Fall arrest assembly
- Platform anti-squeeze auxiliary rail
- Platform with half-height mesh

XCMG FIRE-FIGHTING SAFETY EQUIPMENT CO.,LTD

No.17 Zhujiang East Road, Hi-Tech Development Zone, Xuzhou, Jiangsu, China
mewp@xcmg.com

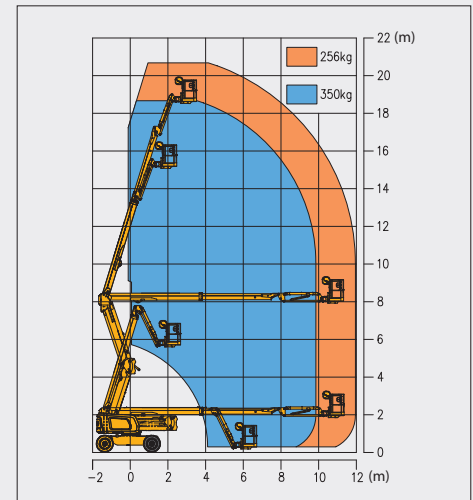
Articulated Boom Lift-Engine Powered

Item	Metric	
Dimension		
Overall dimension - stowed	Length	8520mm
	Width	2300mm
	Height	2430mm
Overall dimension - transported	Length	6300mm
	Width	2300mm
	Height	3000mm
Platform dimensions	Length	1830mm
	Width	760mm
	Height	1150mm
Wheelbase		2500mm
Fly jib length		1850mm
Min. ground clearance		330mm

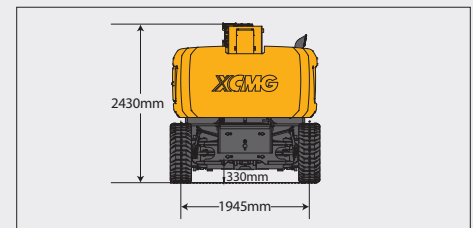
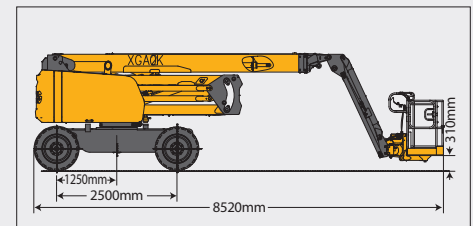
Performance	
Max. working height	20.63m
Max. platform height	18.63m
Max. outreach	12.08m
Max. up and over clearance	8m
Max. lift capacity	256 kg(unlimited)/350 kg(limited)
Max. platform occupancy	2/3
Max. chassis allowable angle	X-5°/ Y-5°
1st boom luffing range	0~72°
2nd boom luffing range	0~73°
Fly boom luffing range	-65~70°
Turntable rotation	360°
Platform rotation	160°
Total weight	10500kg
Driving speed (stowed)	5.5km/h
Driving speed (raised or extended)	0.6km/h
Min. turning radius (inside/ outside)	2300/5000mm
Turntable tailswing (stowed)	540mm
Max. gradeability	45% (24°)

Power source	
Control	12 V DC proportional control
Emergency power supply	12V/110Ah
Engine model	Kubota V2403
Engine power	36kW/(2600r/min)
Max. engine torque	156.3N·m/(1600r/min)
Engine emission standard	China IV
Hydraulic tank capacity	120 L
Fuel tank capacity	90 L

Tire	
Tire size	915mm×326mm
Tire ground pressure	8.29kg/cm ²
Driving wheels	4
Braking wheels	4
Steering wheels	2



Stowed



Trans

